

DAYTON, OHIO

TACAN RWY 5L

TACAN FFO Chan 99	APCH CRS 059°	Rwy Idg 12,600 TDZE 803 Arpt Elev 823
-----------------------------	-------------------------	--

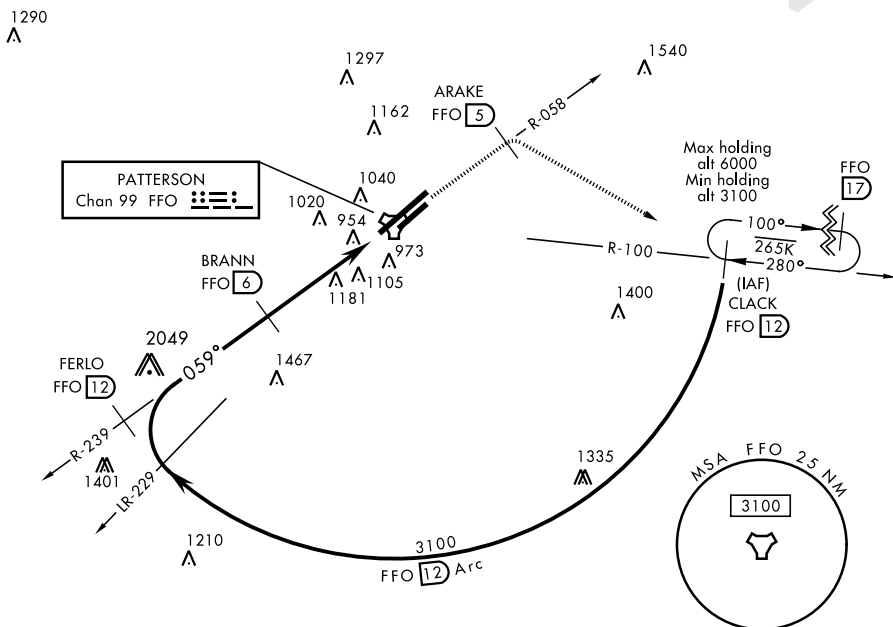
AL-108 [USAF]

WRIGHT-PATTERSON AFB (KFFO)

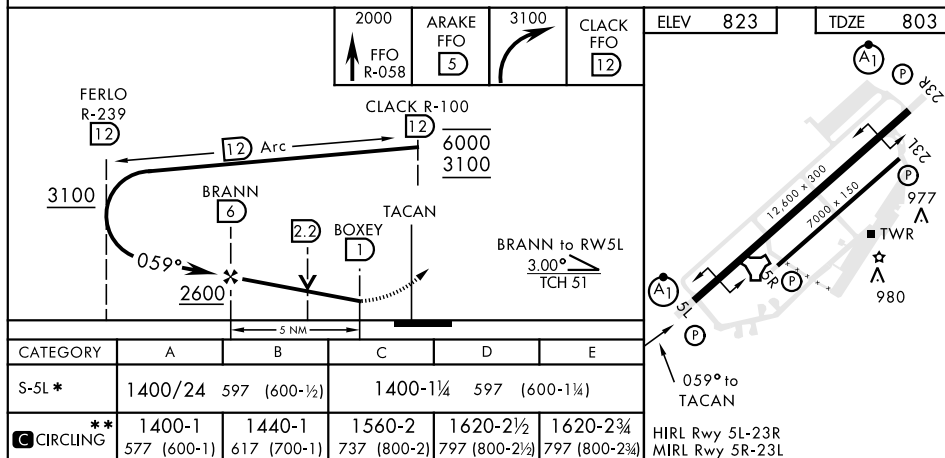
- | | | |
|--|---------------|--|
| <p>▼ * When ALS inop, increase RVR CAT AB to 55 and vis to 1 mile, CAT CDE vis to 1¾ miles.</p> <p>** When Rwy 23R VGSI inop, circling to Rwy 23R NA at night.</p> | <p>ALSF-1</p> | <p>† MISSED APPROACH: Climb to 2000 via FFO R-058 to 5 DME, turn right direct CLACK climbing to 3100 and hold.</p> |
|--|---------------|--|

ATIS 124.475 269.9	COLUMBUS APP CON 118.85 269.275	PATTERSON TOWER 126.9 281.45	GND CON 121.8 335.8
-----------------------	------------------------------------	---------------------------------	------------------------

† Missed approach requires use of RNAV or ATC radar monitoring.



EMERG SAFE ALT 100 NM 3700



DAYTON, OHIO
Amdt 7 05JAN17

39° 50' N-84° 03' W

WRIGHT-PATTERSON AFB (KFFO)

TACAN RWY 5L

DEC-2, 31 DEC 2020 to 28 JAN 2021

EC-2, 31 DEC 2020 to 28 JAN 2021