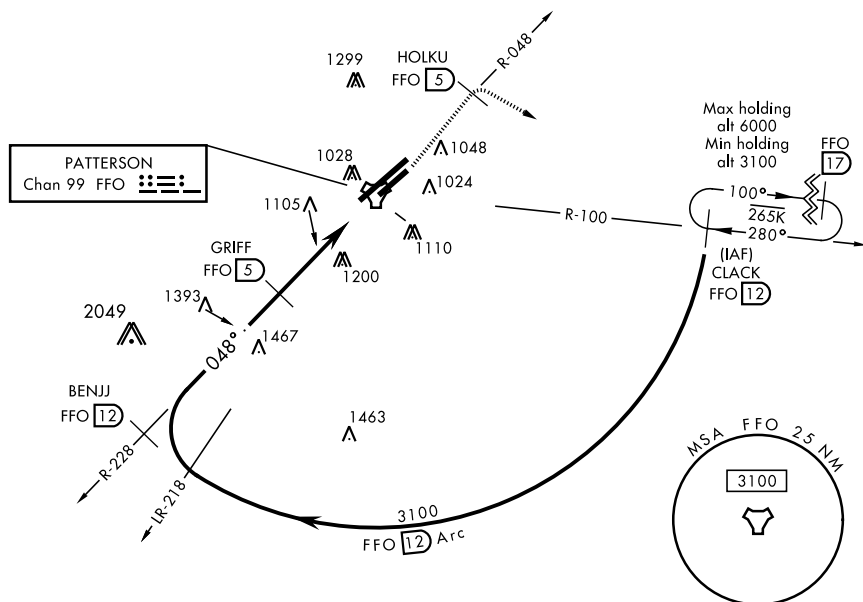
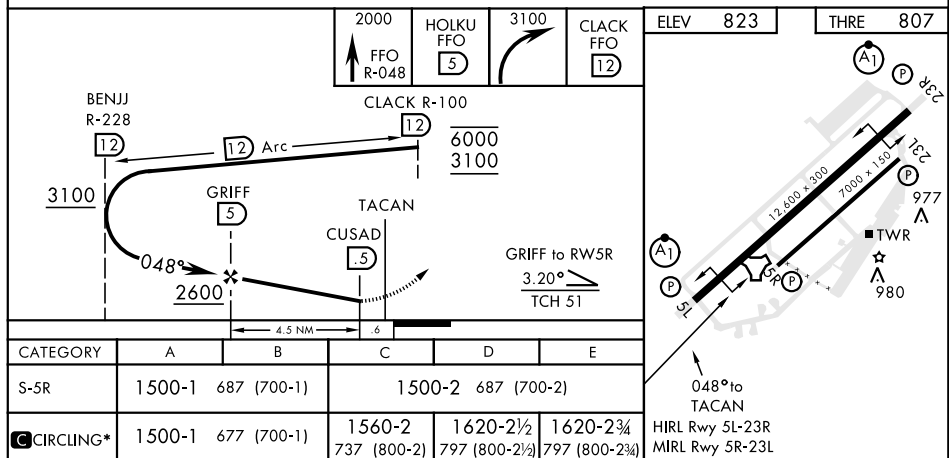


TACAN RWY 5R

TACAN FFO Chan 99	APCH CRS 048°	Rwy Ldg 7000 THRE 807 Arpt Elev 823	AL-108 [USAF]		WRIGHT-PATTERSON AFB (KFFO)	
▼ * When Rwy 23R VGSI inop, circling to Rwy 23R NA at night.			MISSED APPROACH: Climb to 2000 via FFO R-048 to HOLKU, turn right direct CLACK climbing to 3100 and hold.			
ATIS 124.475 269.9		COLUMBUS APP CON 118.85 269.275		PATTERSON TOWER 126.9 281.45		GND CON 121.8 335.8



EMERG SAFE ALT 100 NM 3700



DAYTON, OHIO
Amdt 5 05JAN17

39° 50' N-84° 03' W

WRIGHT-PATTERSON AFB (KFFO)

TACAN RWY 5R

EC-2, 31 DEC 2020 to 28 JAN 2021