

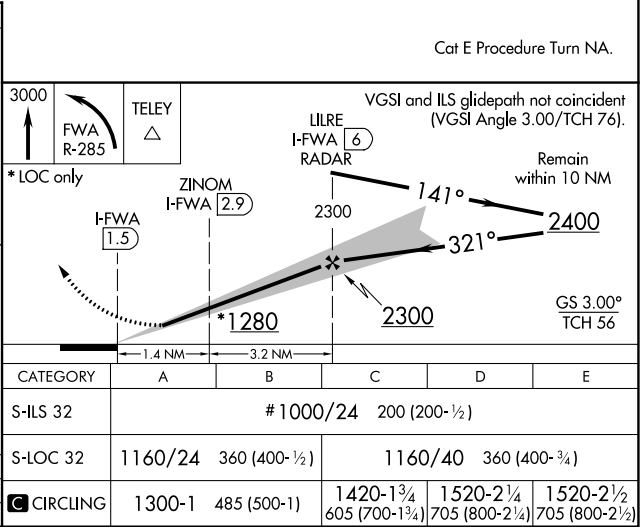
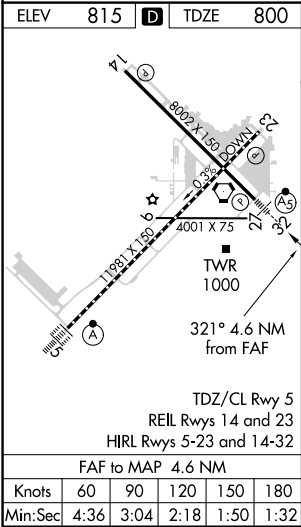
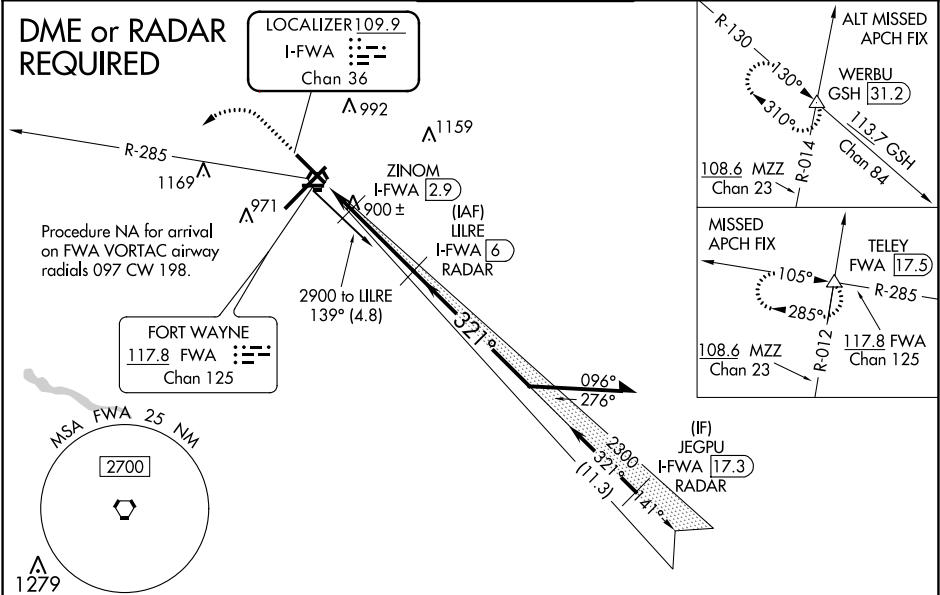


LOC/DME I-FWA 109.9 Chan 36	APP CRS 321°	Rwy Idg TDZE Apt Elev 8001 800 815
---	------------------------	--

ILS or LOC RWY 32
FORT WAYNE INTL (FWA)

DME required for LOC only. DME or RADAR required for procedure entry.			MALSR		MISSED APPROACH: Climb to 3000 then left turn on FWA VORTAC R-285 to TELEY INT/FWA 17.5 DME and hold.
For inop ALS, increase S-ILS 32 Cat E visibility to RVR 4000, S-LOC 32 Cat E visibility to RVR 6000. Use I-FWA DME when on the localizer course. # RVR 1800 authorized with use of FD or AP or HUD to DA.					
 ASR					
ATIS 121.25 360.825	FORT WAYNE APP CON 127.2 284.6	FORT WAYNE TOWER 119.1 269.325		GND CON 121.9 348.6	CLNC DEL 124.75



EC-2, 31 DEC 2020 to 28 JAN 2021

EC-2, 31 DEC 2020 to 28 JAN 2021