
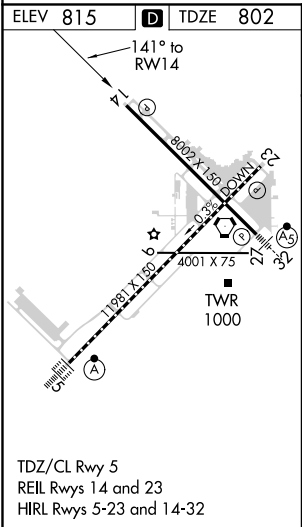
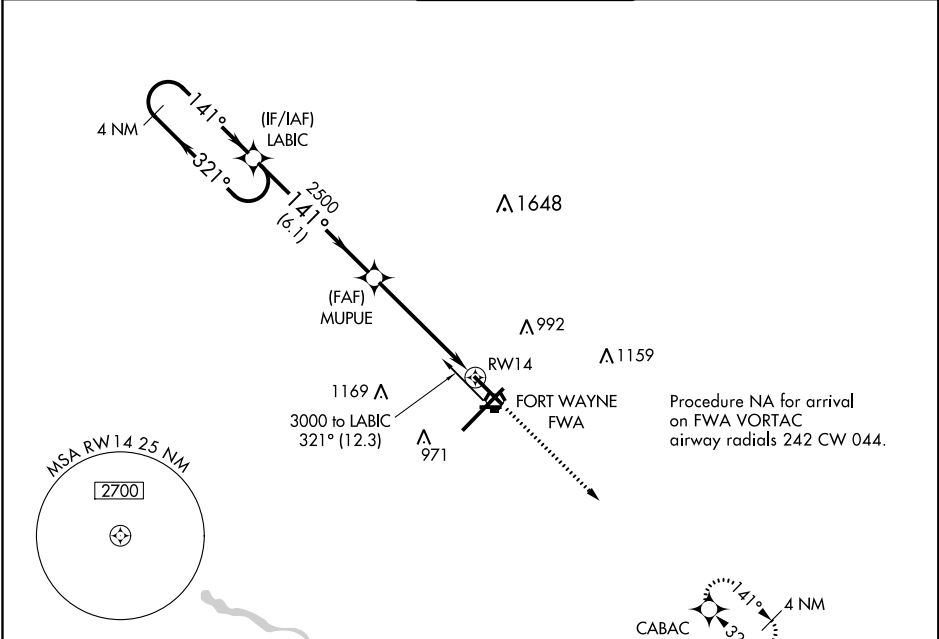


WAAS CH 86417 W14A	APP CRS 141°	Rwy Idg TDZE Apt Elev	8001 802 815
--	------------------------	-----------------------------	---

RNAV (GPS) RWY 14
FORT WAYNE INTL (FWA)

 For uncompensated Baro-VNAV systems, LNAV/VNAV NA below -16°C (4°F) or above 47°C (116°F). DME/DME RNP-0.3 NA.		MISSED APPROACH: Climb to 3000 direct CABAC and hold.		
ATIS 121.25 360.825	FORT WAYNE APP CON 127.2 284.6	FORT WAYNE TOWER 119.1 269.325	GND CON 121.9 348.6	CLNC DEL 124.75



ELEV 815		D	TDZE 802
4 NM Holding Pattern		3000 CABAC	
3000 ← 321° 141° →		MUPUE 2500	
GP 3.00° TCH 53		* 1.5 NM to RW14 * LNAV only	
		6.1 NM 3.6 NM 1.5	
CATEGORY	A	B	C
LPV DA		1002-3/4	200 (200-3/4)
LNAV/VNAV DA		1199-1 1/4	397 (400-1 1/4)
LNAV MDA	1320-1	518 (600-1)	1320-1 3/8 518 (600-1 3/8)
CIRCLING	1320-1	505 (600-1)	1420-1 3/4 605 (700-1 3/4) 1520-2 1/4 705 (800-2 1/4)

EC-2, 31 DEC 2020 to 28 JAN 2021

EC-2, 31 DEC 2020 to 28 JAN 2021