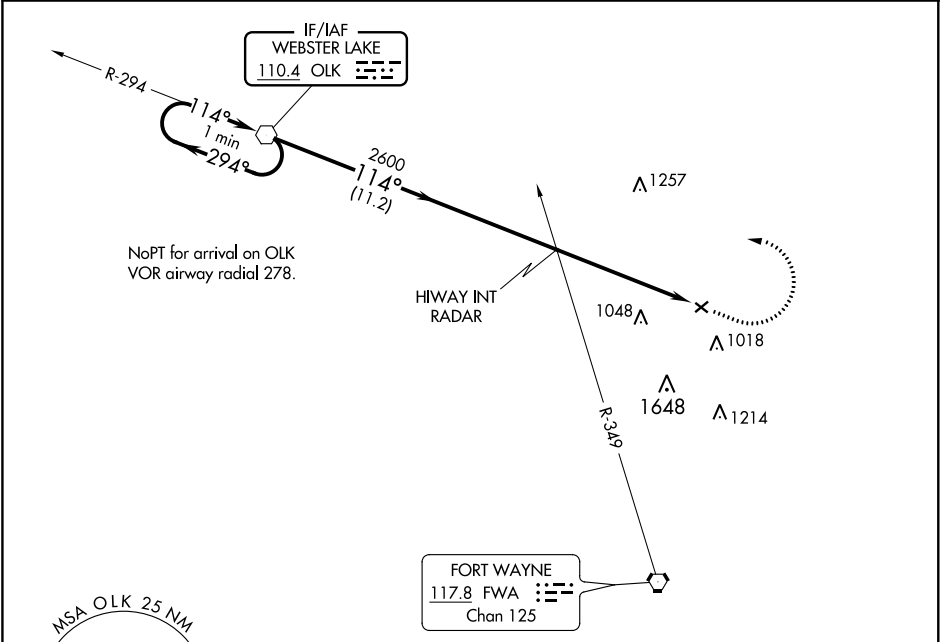


VOR OLK 110.4	APP CRS 114°	Rwy Idg TDZE Apt Elev	2623 836 836
-------------------------	------------------------	-----------------------------	---

VOR RWY 13
SMITH FIELD (SMD)

V NA -22°C	Rwy 13 helicopter visibility reduction below 1 SM NA. Procedure NA at night. When local altimeter setting not received, use Fort Wayne Intl altimeter setting and increase all MDA 40 feet and S-13 Cat C visibility 1/8 SM.	MISSED APPROACH: Climb to 1900 then climbing left turn to 2700 direct OLK VOR and hold.
---------------------------------------	--	---

AWOS-3 124.55	FORT WAYNE APP CON 127.2 284.6	UNICOM 122.8 (CTAF) 0
-------------------------	--	---------------------------------



2700

One Minute Holding Pattern

OLK
VOR

1900

2700

OLK

2700

294°

114°

11.2 NM

2600

114°

3.00°

TCH 40

5.4 NM

CATEGORY	A	B	C	D
S-13	1360-1	524 (600-1)	1360-1½ 524 (600-1½)	NA
C CIRCLING	1400-1	564 (600-1)	1940-3 1104 (1200-3)	NA

ELEV 836

TDZE 836

114° 5.4 NM from FAF

MIRL Rwy 5-23 and 13-31

FAF to MAP 5.4 NM

Knots	60	90	120	150	180
Min:Sec	5:24	3:36	2:42	2:10	1:48

EC-2, 31 DEC 2020 to 28 JAN 2021

EC-2, 31 DEC 2020 to 28 JAN 2021