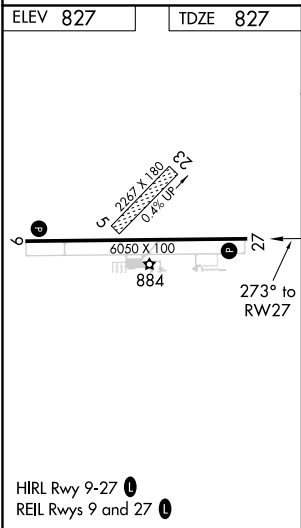
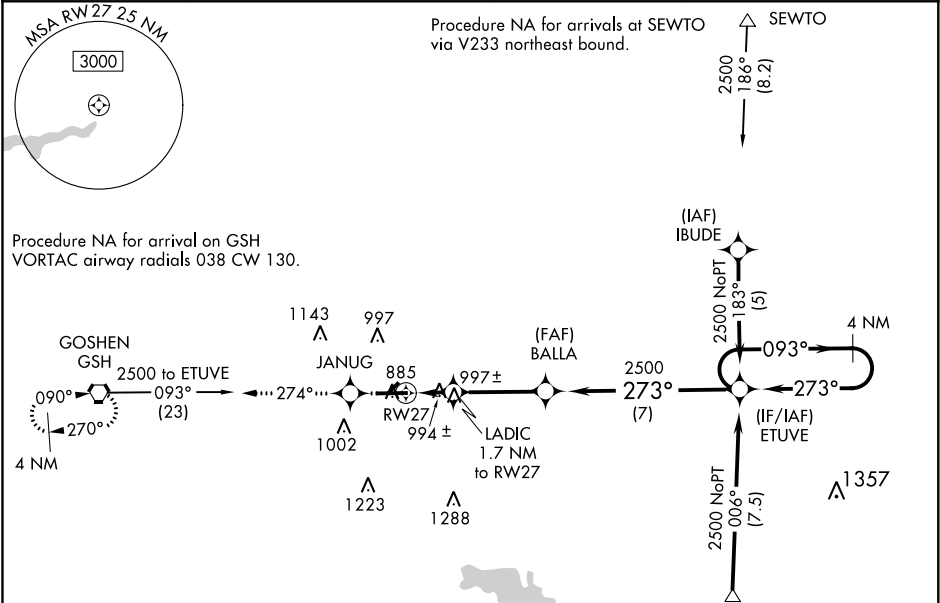


WAAS CH 97606 W27A	APP CRS 273°	Rwy Idg TDZE Apt Elev	6050 827 827
--	------------------------	-----------------------------	---

RNAV (GPS) RWY 27
GOSHEN MUNI (GSH)

RNP APCH.			MISSED APPROACH: Climb to 2500 direct JANUG and on 274° track to GSH VORTAC and hold.	
<div><div>▼</div><div>▲</div></div>	Baro-VNAV NA when using Warsaw Muni altimeter setting. For uncompensated Baro-VNAV systems, LNAV/VNAV NA below -16°C or above 47°C. When local altimeter setting not received, use Warsaw Muni altimeter setting and increase all DAs/MDAs 40 feet, and increase LPV all Cats visibility ¼ mile. Circling NA to Rwy's 5 and 23. Rwy 27 helicopter visibility reduction below ¾ SM NA.			
ASOS 121.45	SOUTH BEND APP CON ★ 132.05 257.8		CLNC DEL 125.25	UNICOM 123.05 (CTAF) 0



Procedure NA for arrivals at RABBT via V277 southeast bound.			
2500	JANUG	GSH	VGSI and RNAV glidepath not coincident (VGSI Angle 3.00/TCH 51).
4 NM Holding Pattern			
*LNAV only.			
LADIC 1.7 NM to RW27			
RW27			
1400*			
2500			
273°			
093°			
GS 3.00° TCH 56			
CATEGORY	A	B	C
LPV DA	1120-1 293 (300-1)		
LNAV/DA	1307-1¼ 480 (500-1¼)		
LNAV MDA	1260-1	433 (500-1)	1260-1¼ 433 (500-1¼)
CIRCLING	1300-1	473 (500-1)	1380-2 553 (600-2)

EC-2, 31 DEC 2020 to 28 JAN 2021

EC-2, 31 DEC 2020 to 28 JAN 2021