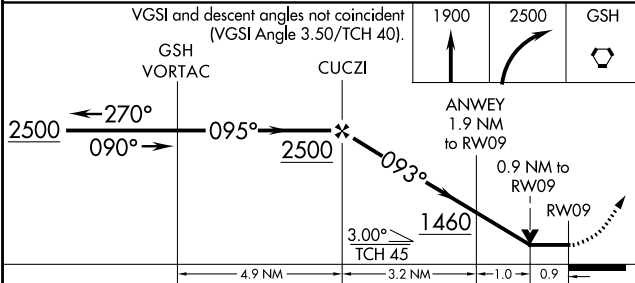
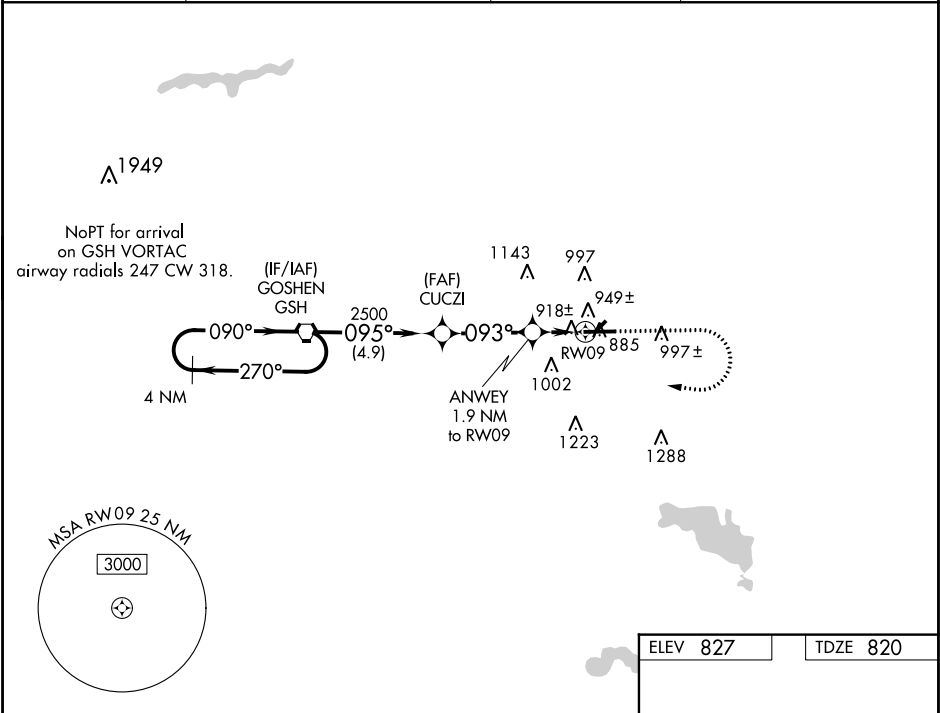


WAAS CH 69325 W09A	APP CRS 093°	Rwy Idg 6050 TDZE 820 Apt Elev 827
--	------------------------	---

RNAV (GPS) RWY 9
GOSHEN MUNI (GSH)

<p>⚠ DME/DME RNP-0.3 NA. Visibility reduction by helicopters NA. VDP NA with Warsaw altimeter setting. Circling to Rwy 5/23 NA. When local altimeter setting not received, use Warsaw altimeter setting and increase all MDA 40 feet and LP and LNAV Cats C and D visibility 1/8 mile.</p>	<p>MISSED APPROACH: Climb to 1900 then climbing right turn to 2500 direct GSH VORTAC and hold.</p>
---	--

ASOS 121.45	SOUTH BEND APP CON* 132.05 257.8	CLNC DEL 125.25	UNICOM 123.05 (CTAF) 0
-----------------------	--	---------------------------	----------------------------------



ELEV 827	TDZE 820
<p>HIRL Rwy 9-27 0 REIL Rwy 9 and 27 0</p>	

EC-2, 31 DEC 2020 to 28 JAN 2021

EC-2, 31 DEC 2020 to 28 JAN 2021