


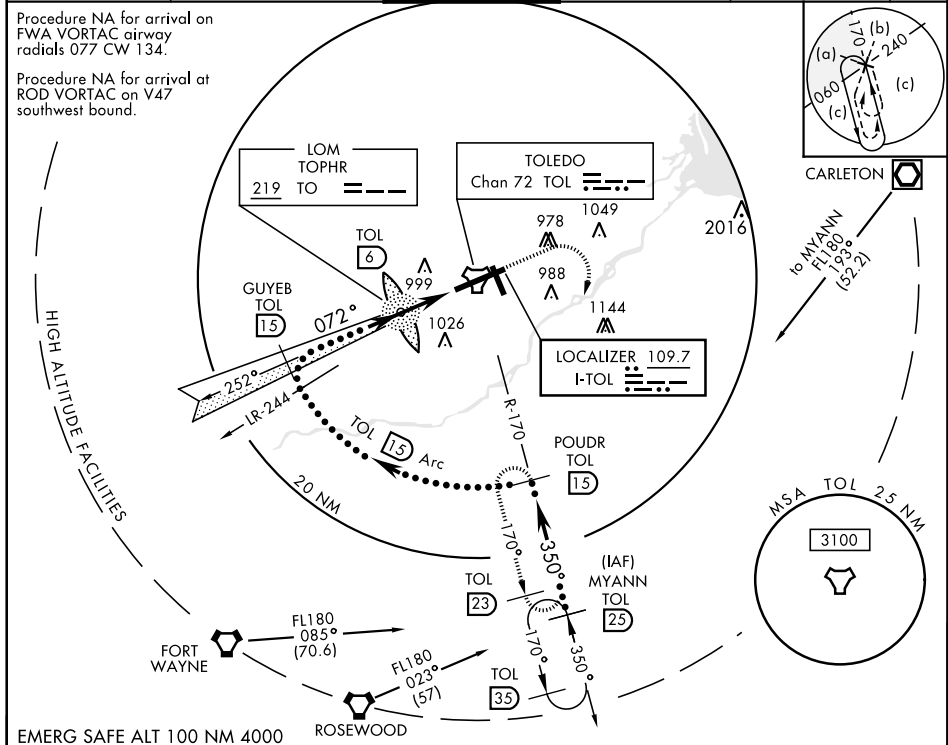


# HI-ILS Y or LOC Y RWY 7

LOC I-TOL <b>109.7</b>	APCH CRS <b>072°</b>	Rwy ldg TDZE Arprt Elev <b>10,599</b> <b>683</b> <b>683</b>	JAL-184 [USAF]	EUGENE F KRANZ TOLEDO EXPRESS (KTOL)
---------------------------	-------------------------	--	----------------	--------------------------------------

DME required.		ALS F-2 	MISSED APPROACH: Climb to 2500, then climbing right turn to 3000 via TOL R-170 to POU DR and hold.							
	*When ALS inop, increase CAT E RVR to 40, vis to ¾.									
	**When ALS inop, increase CAT E RVR to 60, vis to 1½.									
ATIS 118.75 290.225		TOLEDO APP CON 126.1 317.55		TOLEDO TOWER 118.1 285.4		GND CON 121.9 348.6		CLNC DEL 121.75 348.6		ASR



MYANN R-170 [25]	POU DR R-170 [15]	GUYEB INTCP LCZR [15]	LOM [6] 2162	TACAN
15,000	10,000	4000	2200	
GS 3.00° TCH 59	Arc			
2500	3000	POU DR		
↑ LOC only				
769 ±	750	778	726 ±	775 ±
072° 4.4 NM from FAF				
1300-1¾ 617 (700-1¾)	1400-2¼ 717 (800-2¼)	1400-2½ 717 (800-2½)		
CIRCLING				

# HI-ILS Y or LOC Y RWY 7