

HI-TACAN RWY 7

TACAN TOL Chan 72	APCH CRS 068°	Rwy Idg 10,599 TDZE 683 Arpt Elev 683
-----------------------------	-------------------------	--

JAL-184 [USAF]

EUGENE F KRANZ TOLEDO EXPRESS (KTOL)

T * When ALS inop increase CAT E vis to 1 3/8 mile.

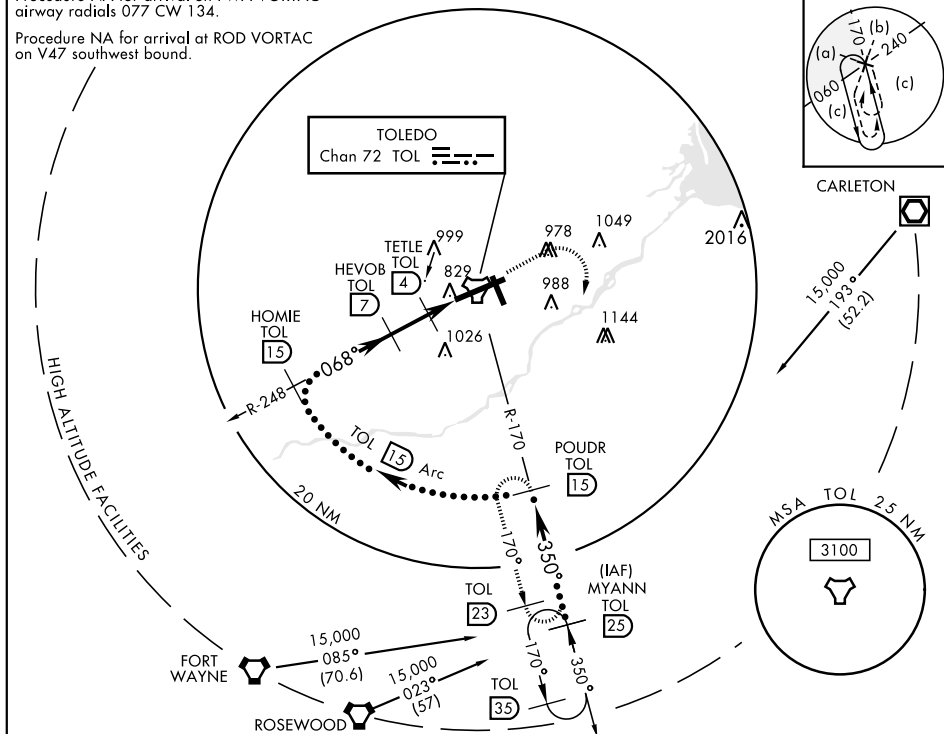
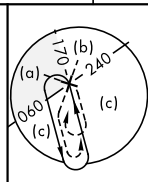


MISSED APPROACH: Climb to 3000 then right turn via TOL R-170 to POUDR and hold.

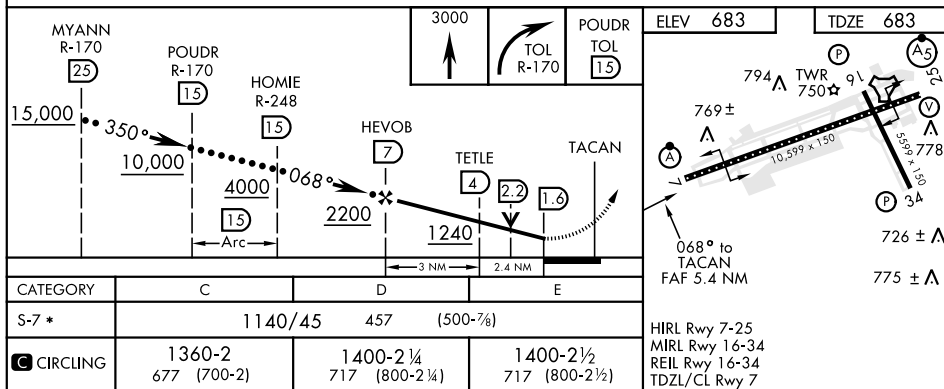
ATIS 118.75 290.225	TOLEDO APP CON 126.1 317.55	TOLEDO TOWER 118.1 285.4	GND CON 121.9 348.6	CLNC DEL 121.75 348.6	ASR
------------------------	--------------------------------	-----------------------------	------------------------	--------------------------	-----

Procedure NA for arrival on FWA VORTAC
airway radials 077 CW 134.

Procedure NA for arrival at ROD VORTAC
on V47 southwest bound.



EMERG SAFE ALT 100 NM 4000



TOLEDO, OHIO

41° 35' N-83° 48' W EUGENE F KRANZ TOLEDO EXPRESS (KTOL)

HI-TACAN RWY 7