
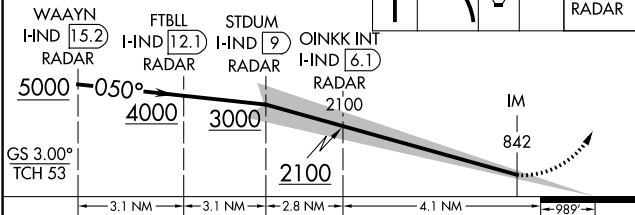


ILS RWY 5L (CAT II & III)  
INDIANAPOLIS INTL (IND)

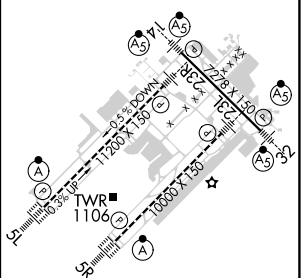
**MISSED APPROACH:** Climb to 1700 then climbing left turn to 3000 direct VHP VORTAC then on VHP VORTAC R-303 to KEADY/VHP 4.9 DME/RADAR and hold.

1700	3000	VHP 	VHP R-303	KEADY VHP 4.9 RADAR
------	------	--	--------------	---------------------------



CATEGORY	A	B	C	D
S-ILS 5L	CAT II RA 113/12 100 DA 847			
S-ILS 5L	CAT III RVR 07			

## CATEGORY II & III ILS - SPECIAL AIRCREW & AIRCRAFT CERTIFICATION REQUIRED



HIRL all Rwy's  
TDZ/CL Rwy's 5L and 5R