

ILS or LOC RWY 5L  
INDIANAPOLIS INTL (IND)

ALSF-2

**MISSED APPROACH:** Climb to 1700 then climbing left turn to 3000 direct VHP VORTAC then on VHP VORTAC R-303 to KEADY/VHP 4.9 DME/RADAR and hold.

**MISSED APCH FIX**

R-303 123° 303°

KEADY VHP [4.9] RADAR

116.3 VHP Chan 110

OINKK INT I-IND [6.1] RADAR

STDUM I-IND [9] RADAR

(IF) FTBLL I-IND [12.1] RADAR

(IAF) WAAAYN I-IND [15.2] RADAR 210K

5000 to WAAAYN 004° (0.9) and LOC (10.1)

(IAF) KELLY VHP [27.9] (CFVDC)

Procedure NA for arrivals at KELLY on V11 southwest bound and V12 westbound.

**RADAR or DME REQUIRED**

ALTERNATE MISSED APCH FIX


115.3 TTH R-077 Chan 100

CLOTT TTH [23.3] RADAR

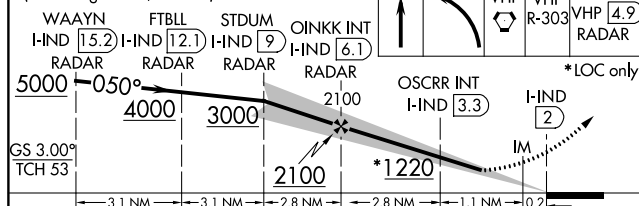
MSA VHP 25 NM 3100



1546 1159 895 870± 116.3 VHP R-169 Chan 110 OSCRR INT I-IND [3.3] 1252 1150 1183 Chan 110

LOCALIZER 111.75 I-IND Chan 54(Y)

1700 ↑	3000 ↖	VHP 	VHP R-303	KEADY VHP 4.9 RADAR
-----------	-----------	--	--------------	---------------------------

\*1QC only



CATEGORY	A	B	C	D
S-ILS 5L	947/18		200 (200-½)	
S-LOC 5L	1220/24	473 (500-½)	1220/50	473 (500-1)
 CIRCLING	1420-1	624 (700-1)	1420-1¾ 624 (700-1¾)	1560-2½ 764 (800-2½)
OSCRF FIX MINIMUMS (DUAL VOR RECEIVERS OR DME REQUIRED)				
S-LOC 5L	1120/24	373 (400-½)	1120/35	373 (400-⅝)
 CIRCLING	1420-1	624 (700-1)	1420-1¾ 624 (700-1¾)	1560-2½ 764 (800-2½)

FAF to MAP 4.1 NM					
Knots	60	90	120	150	180
Min:Sec	4:06	2:44	2:03	1:38	1:22

EC-2, 31 DEC 2020 to 28 JAN 2021

EC-2, 31 DEC 2020 to 28 JAN 2021