

APP CRS	Rwy Idg	11200
230°	TDZE	783
	Apt Elev	796

RNAV (RNP) Z RWY 23R

INDIANAPOLIS INTL (IND)

▼

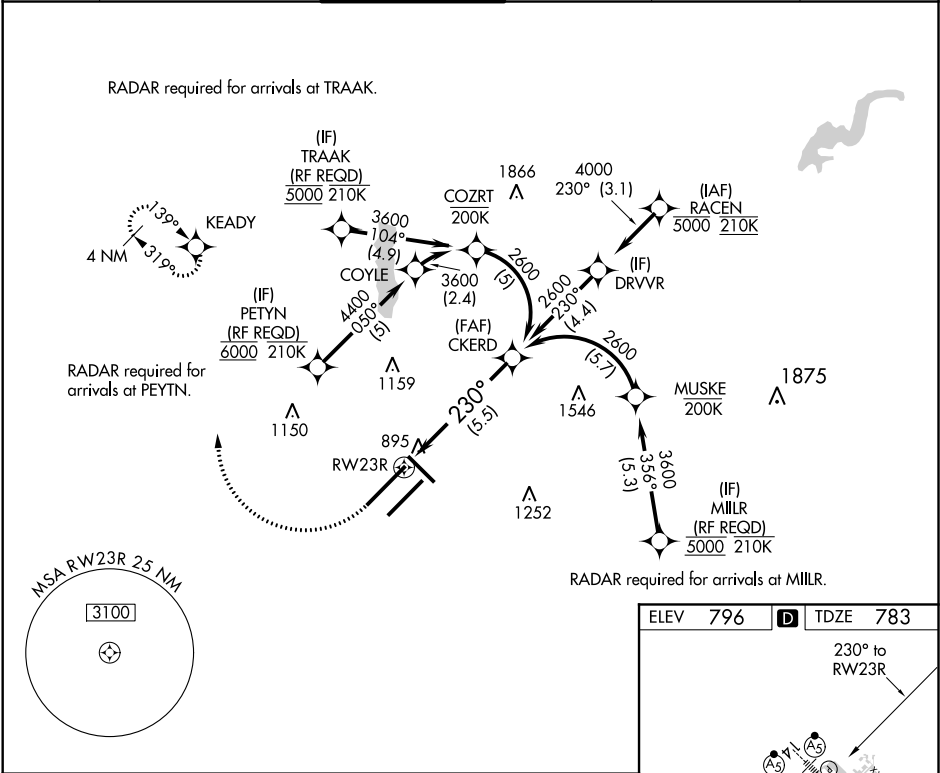
For uncompensated Baro-VNAV systems, procedure NA below -18°C (0°F) or above 54°C (130°F). GPS Required. For inoperative ALS, increase RNP 0.15 all Cats visibility to RVR 6000 and increase RNP 0.30 all Cats visibility to 1 3⁄8 SM. Simultaneous approach authorized.

MALSR

MISSED APPROACH:

Climb to 1200 then climbing right turn to 3000 direct KEADY and hold.

D-ATIS	INDIANAPOLIS APP CON	INDY TOWER	GND CON	CLNC DEL	CPDLC
134.25	128.175 317.8	120.9 257.8	121.9	128.75 257.8	



1200

3000

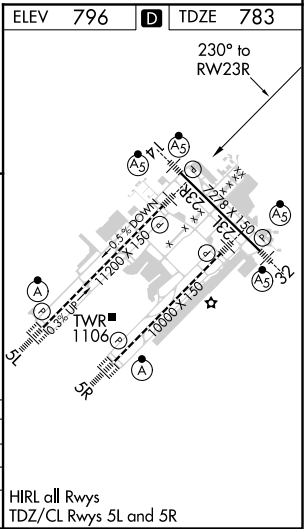
KEADY

See planview for multiple IF locations.

VGSI and RNAV glidepath not coincident (VGSI Angle 3.00/TCH 71).

CATEGORY	A	B	C	D
RNP 0.15 DA		1147/40	364 (400-3⁄4)	
RNP 0.30 DA		1206/50	423 (500-1)	

AUTHORIZATION REQUIRED



EC-2, 31 DEC 2020 to 28 JAN 2021

EC-2, 31 DEC 2020 to 28 JAN 2021