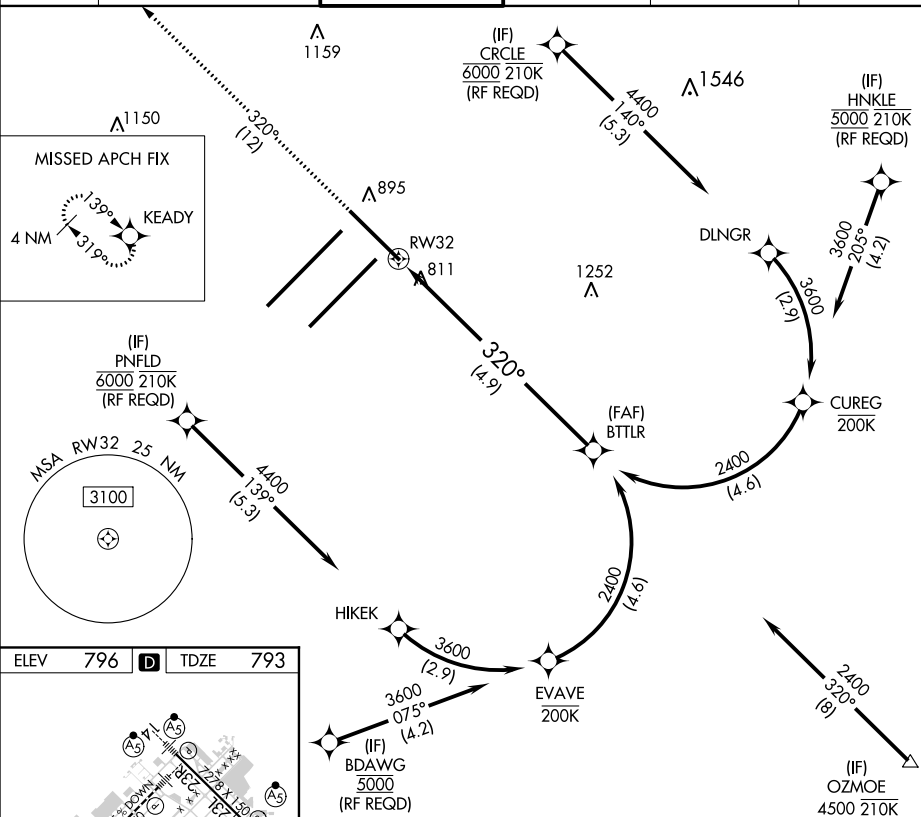


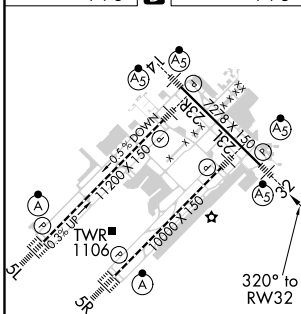
RNAV (RNP) Z RWY 32  
INDIANAPOLIS INTL (IND)

**MISSED APPROACH:** Climb to 3000 on track 320° to KEADY and hold.

CPDLC




ELEV	796	<b>D</b>	TDZE	793
------	-----	----------	------	-----



3000  
↑  
tr 320°

KEADY



VGSI and RNAV glidepath not coincident  
(VGSI Angle 3.00/TCH 73).

BTTLR

ns.  $\frac{2400}{\text{GP 3.0 TCH 5}}$

HIRL all Rwys  
TDZ/CL Rwys 5L and 5R

Amdt 2 10NOV16

39°43'N-86°18'W

INDIANAPOLIS INTL (IND)  
RNAV (RNP) Z RWY 32