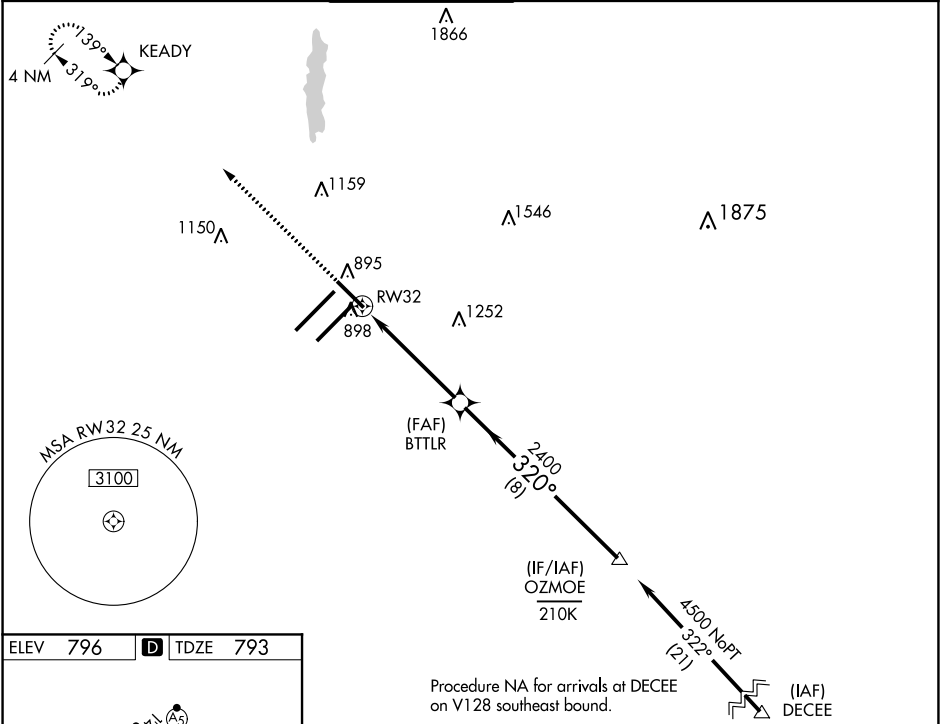


WAAS CH <b>62802</b> <b>W32A</b>	APP CRS <b>320°</b>	Rwy Idg TDZE <b>793</b> Apt Elev <b>796</b>
--	------------------------	---

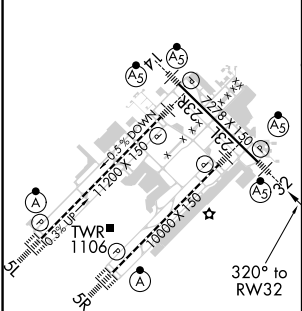
RNAV (GPS) Y RWY 32

INDIANAPOLIS INTL (IND)



<div><div>⚠</div><div>For uncompensated Baro-VNAV systems, LNAV/VNAV NA below -18°C (0°F) or above 54°C (130°F). DME/DME RNP-0.3 NA. **RVR 1800 authorized with use of FD or AP or HUD to DA.</div></div>			<div>MALSRR</div> <div><div>AS</div><div></div></div>	MISSED APPROACH: Climb to 3000 direct KEADY and hold.	
D-ATIS <b>134.25</b>	INDIANAPOLIS APP CON <b>128.175 317.8</b>	INDY TOWER <b>120.9 257.8</b>	GND CON <b>121.9</b>	CLNC DEL <b>128.75 257.8</b>	CPDLC



ELEV <b>796</b>	<b>D</b>	TDZE <b>793</b>
-----------------	----------	-----------------



HIRL all Rwys  
TDZ/CL Rwys 5L and 5R

<div>3000</div> <div>↑</div>		<div>KEADY</div> <div></div>		<div>VGSI and RNAV glidepath not coincident (VGSI Angle 3.00/TCH 73).</div>		<div>OZMOE</div> <div>4500</div>			
<div>*LNAV only</div>		<div>*1 NM to RW32</div>		<div>BTTLR</div> <div>2400</div>		<div>320°</div> <div>2400</div>			
<div>RW32</div> <div></div>		<div>1 NM</div>		<div>3.9 NM</div>		<div>8 NM</div>			
						<div>GP 3.00°</div> <div>TCH 53</div>			
CATEGORY		A		B		C		D	
LPV DA				** 993/24		200 (200-½)			
LNAV/ VNAV DA				1069/24		276 (300-½)			
LNAV MDA		1160/24		367 (400-½)		1160/35		367 (400-¾)	
<div>CIRCLING</div>		1420-1		624 (700-1)		1420-1¾ 624 (700-1¾)		1560-2½ 764 (800-2½)	