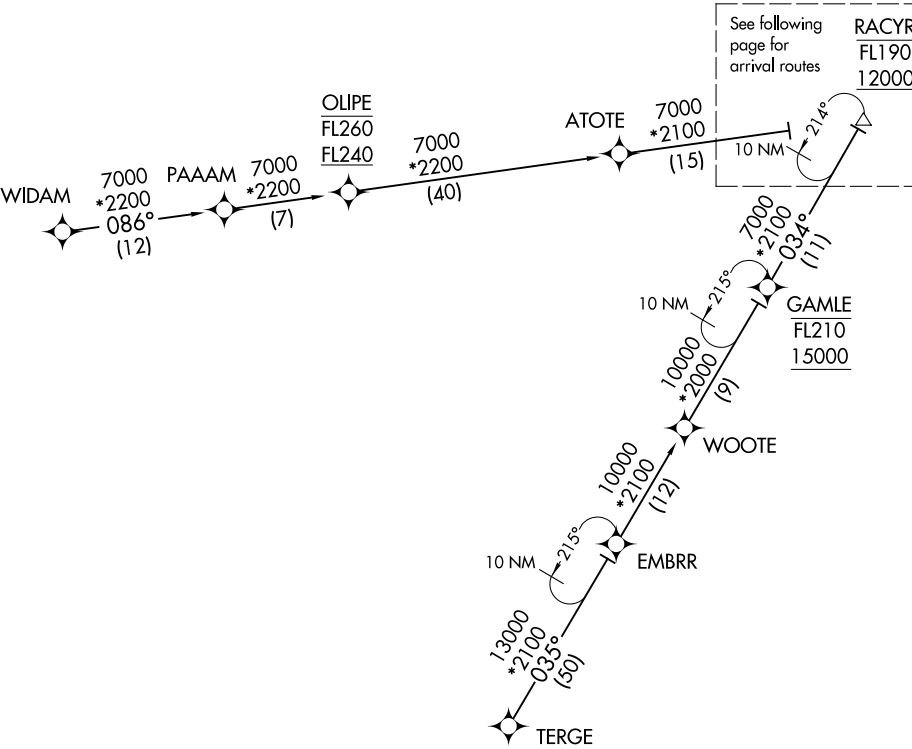


(RACYR.SMUKE2) 17173  
SMUKE TWO ARRIVAL (RNAV) Transition Routes

INDIANAPOLIS INTL (IND)  
INDIANAPOLIS, INDIANA

INDIANAPOLIS APP CON  
128.175 317.8  
D-ATIS  
134.25



- NOTE: RADAR required.
- NOTE: RNAV 1.
- NOTE: DME/DME/IRU or GPS required.
- NOTE: Expect descend via clearance and landing direction assignment by Indianapolis Center. Approach will assign landing Rwy.
- NOTE: For non-GPS equipped aircraft landing Rwy 23L; SHB DME must be operational.
- NOTE: For non-GPS equipped aircraft landing Rwy 23R; SHB and VHP DMEs must be operational.

(CONTINUED ON FOLLOWING PAGE)

EMBRR TRANSITION (EMBRR.SMUKE2):  
TERGE TRANSITION (TERGE.SMUKE2):  
WIDAM TRANSITION (WIDAM.SMUKE2):

NOTE: Chart not to scale.

SMUKE TWO ARRIVAL (RNAV) Transition Routes  
(RACYR.SMUKE2) 10NOV16

INDIANAPOLIS, INDIANA  
INDIANAPOLIS INTL (IND)