

WAAS CH 82103 W28A	APP CRS 280°	Rwy Idg TDZE 598 Apt Elev 606
--	------------------------	---

RNAV (GPS) RWY 28

PURDUE UNIVERSITY (LAF)

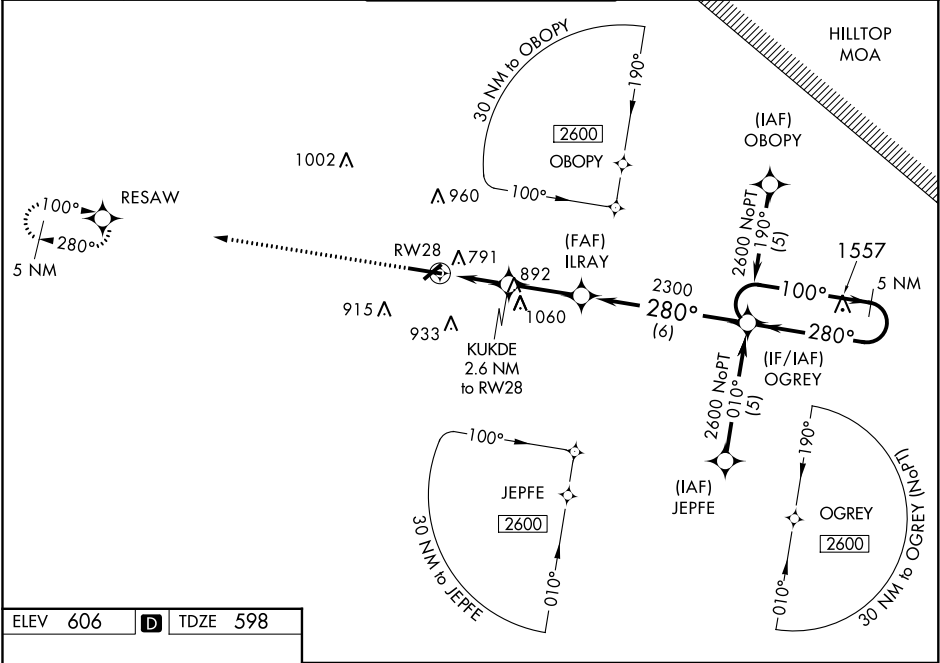
▼

▲

If local altimeter setting not received, use Vermilion Rgnl altimeter setting and increase all DAs 89 feet, all MDAs 100 feet. Baro-VNAV NA when using Vermilion Rgnl altimeter setting. For uncompensated Baro-VNAV systems, LNAV/VNAV NA below -16°C (4°F) or above 47°C (116°F). DME/DME RNP-0.3 NA. Rwy 28 helicopter visibility reduction below ¾ SM NA. Circling Rwy 23 NA at night.

MISSED APPROACH: Climb to 2600 direct RESAW and hold.

ATIS 127.75	GRISSOM APP CON ★ 123.85 291.675	LAFAYETTE TOWER ★ 119.6 (CTAF) 0 393.0	GND CON 121.9 393.0	UNICOM 122.95
-----------------------	--	--	-------------------------------	-------------------------



ELEV 606	D	TDZE 598
----------	---	----------

