

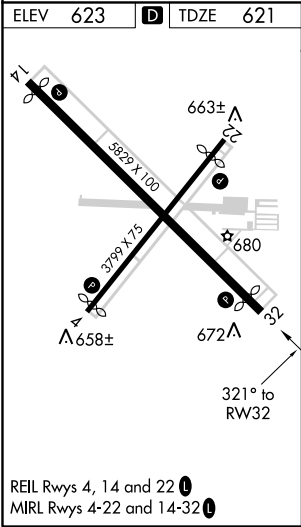
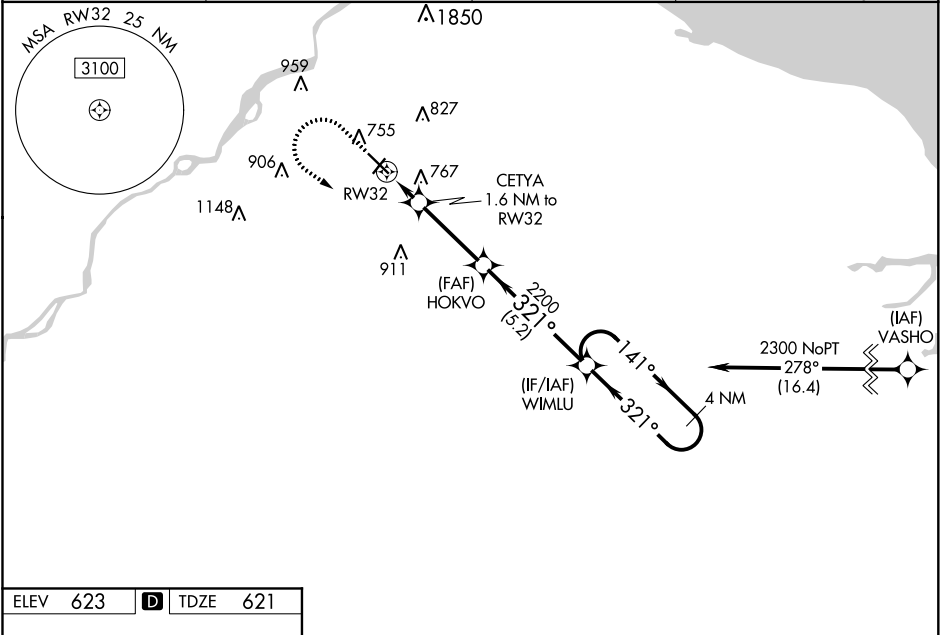
WAAS CH 70524 W32A	APP CRS 321°	Rwy Idg TDZE Apt Elev	4927 621 623
--	------------------------	-----------------------------	---

RNAV (GPS) RWY 32

TOLEDO EXECUTIVE (TDZ)

RNP APCH.	<p>⚠ Circling Rwy 14 NA at night. Baro-VNAV NA when using Toledo Express altimeter setting. For uncompensated Baro-VNAV systems, LNAV/VNAV NA below -20°C (-4°F) or above 54°C (130°F). Rwy 32 helicopter visibility reduction below ¾ SM NA. When local altimeter setting not received, use Toledo Express altimeter setting and increase LPV DA to 914, LNAV/VNAV to 1123, increase LPV all Cats visibility ½ SM. Increase all MDA 60 feet and increase LNAV Cats C and D and Circling Cat D visibility ¼ SM.</p>	MISSED APPROACH: Climb to 1100 then climbing left turn to 2300 direct WIMLU and hold.
-----------	---	---

ASOS 121.575	TOLEDO APP CON 126.1 307.0	CLNC DEL 125.6	UNICOM 123.05 (CTAF) 1
------------------------	--------------------------------------	--------------------------	----------------------------------



1100

↑

2300

↷

WIMLU

✦

*LNAV only.

CETYA

1.6 NM to RW32

HOKVO

2200

WIMLU

4 NM Holding Pattern

141°

→

←

321°

2300

RW32

↶

1160*

↗

2200

↖

GP 3.00° TCH 45

1.6 NM

3.2 NM

5.2 NM

CATEGORY	A	B	C	D
LPV DA	871-¾ 250 (300-¾)			
LNAV/VNAV DA	1080-1⅓ 459 (500-1⅓)			
LNAV MDA	1020-1 399 (400-1)	1020-1⅓ 399 (400-1⅓)		
CIRCLING	1080-1 457 (500-1)	1100-1 477 (500-1)	1200-1½ 577 (600-1½)	1320-2¼ 697 (700-2¼)