

PERU, INDIANA

ILS or LOC RWY 23

LOC I-RSM <u>109.5</u>	APCH CRS 226°	Rwy Idg 12,501 TDZE 799 Arpt Elev 811
----------------------------------	-------------------------	--

AL-470 [USAF]

GRISSOM ARB (KGUS)

RADAR or DME required

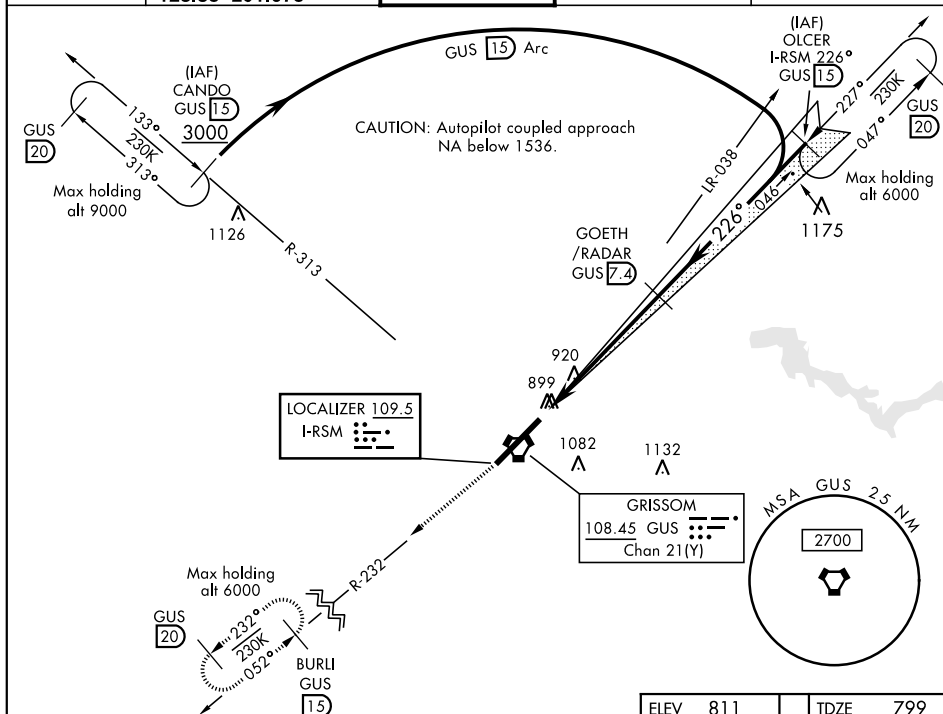
* When ALS inop, increase RVR to 40 and vis to $\frac{3}{4}$ mile.
 ** When ALS inop, increase CAT AB RVR to 55 and vis to 1 mile,
 CAT CDE RVR to 60 and vis to $1\frac{1}{2}$ miles.

ALSF-1

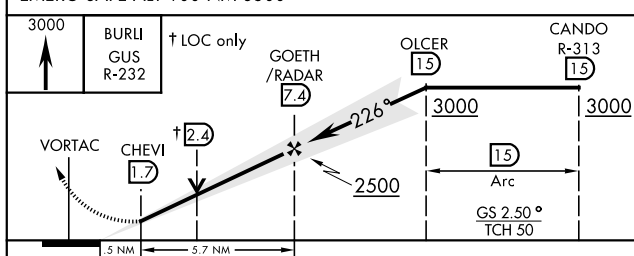



MISSED APPROACH: Climb to 3000 on the GUS R-232 to BURLI (GUS R-232/15 DME) and hold.

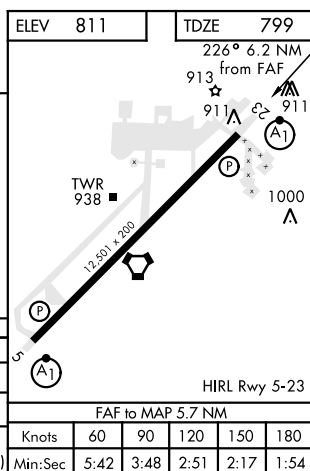
ATIS 108.45 270.8	GRISSOM APP CON 121.05 338.275 EAST 123.85 291.675 WEST	GRISSOM TOWER ★ 133.7 290.45	GND CON 128.425 275.8	CLNC DEL 123.7 318.2
----------------------	---	---------------------------------	--------------------------	-------------------------



EMERG SAFE ALT 100 NM 3500



CATEGORY	A	B	C	D	E
S-LS 23 *	999/24		200	(200-½)	
S-LOC 23 **	1180/24	381 (400-½)	1180/35	381	(400-%)
 CIRCLING	1340-1	529 (600-1)	1400-1½ 589 (600-1½)	1400-2 589 (600-2)	1440-2½ 629 (700-2½)



PERU, INDIANA

40°39'N-86°09'W

GRISSOM ARB (KGUS)

Amdt 6 05NOV20

ILS or LOC RWY 23