
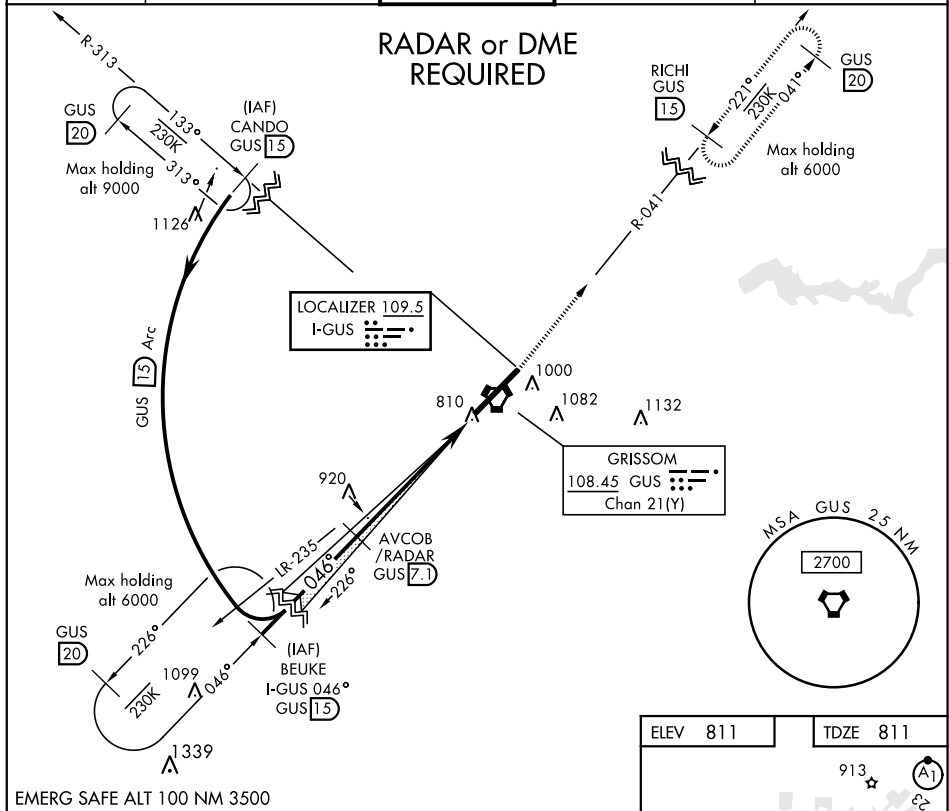


PERU, INDIANA

## ILS or LOC RWY 5

LOC I-GUS <b><u>109.5</u></b>	APCH CRS <b>046°</b>	Rwy ldg <b>12,501</b> TDZE <b>811</b> Arpt Elev <b>811</b>	AL-470 [USAF]	GRISOM ARB (KGUS)
* When ALS inop, increase CAT ABCDE RVR to 40 and vis to $\frac{3}{4}$ mile. ** When ALS inop, increase CAT ABCDE RVR to 55 and vis to 1 mile.			ALSF-1 	MISSED APPROACH: Climb to 3000 on the GUS R-041 to RICHI (GUS R-041/15 DME) and hold.

ATIS	GRISSOM APP CON		GRISSOM TOWER ★	GND CON	CLNC DEL
108.45 270.8	121.05 338.275	EAST WEST	133.7 290.45	128.425 275.8	123.7 318.2
123.85 291.675					



**S-ILS 5\* Approach**

3000 MSL, 0.46° angle, 5.7 NM distance. Altitudes: 3000, 2500, 200, 1400-1½, 1400-2, 1440-2½. Speeds: 1340-1, 529 (600-1), 589 (600-1½), 589 (600-2), 629 (700-2½).

**S-LOC 5\*\* Approach**

3000 MSL, 0.46° angle, 5.7 NM distance. Altitudes: 3000, 2500, 200, 1400-1½, 1400-2, 1440-2½. Speeds: 1340-1, 529 (600-1), 589 (600-1½), 589 (600-2), 629 (700-2½).

PERU, INDIANA

40°39'N-86°09'W

GRISSOM ARB (KGUS)

## ILS or LOC RWY 5

EC-2, 31 DEC 2020 to 28 JAN 2021

EC-2. 31 DEC 2020 to 28 JAN 2021