

WAAS
CH **50421**
W18A

APP CRS
184°

Rwy Idg
TDZE **396**
Apt Elev **422**

RNAV (GPS) RWY 18

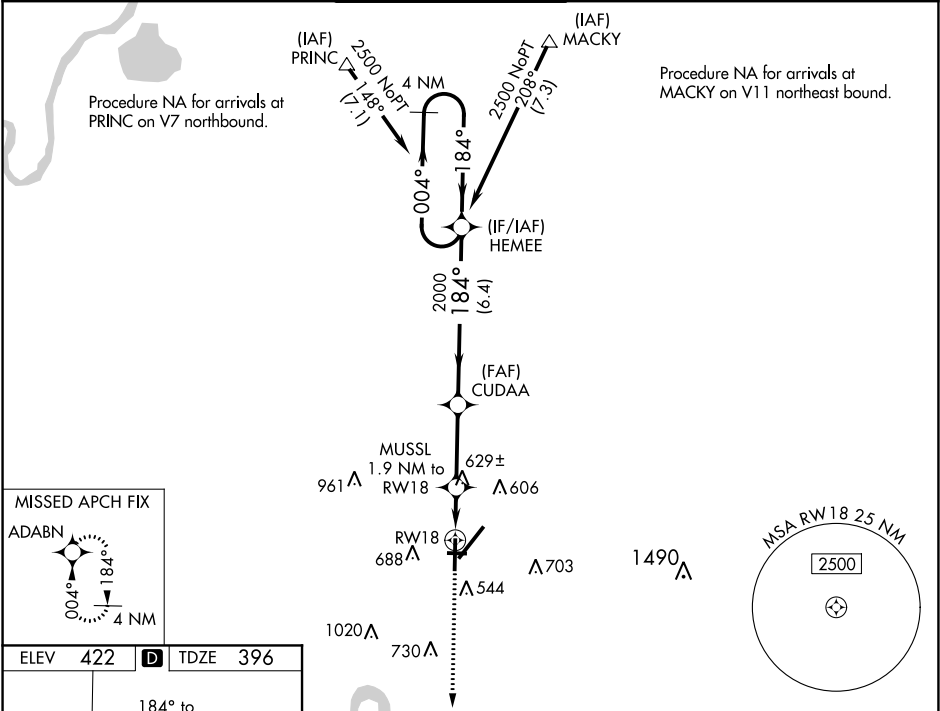
EVANSVILLE RGNL (E^VV)

ASR

For uncompensated Baro-VNAV systems, LNAV/VNAV NA below -15°C (5°F) or above 54°C (130°F). DME/DME RNP-0.3 NA. Circling Rwy 9 NA at night. Helicopter visibility reduction below ¾ SM NA.

MISSED APPROACH:
Climb to 2500 direct ADABN and hold.

ATIS 120.2	EVANSVILLE APP CON ★ 124.025 290.9	EVANSVILLE TOWER ★ 118.7 (CTAF) 0 257.8	GND CON 121.9	CLNC DEL 126.6	UNICOM 122.95
----------------------	--	--	-------------------------	--------------------------	-------------------------



ELEV 422 D TDZE 396		2500 ADABN VGSi and RNAV glidepath not coincident (VGSi Angle 3.00/TCH 50).			
*LNAV only		MUSL 1.9 NM to RW18		CUDAA	
*1.1 NM to RW18		2000		HEMEE	
RW18		*1060		2000	
1.1 0.8 3 NM 6.4 NM		2500		004° → 2500	
CATEGORY		A	B	C	D
LPV DA		596-¾		200 (200-¾)	
LNAV/VNAV DA		931-1¾		535 (600-1¾)	
LNAV MDA		880-1 484 (500-1)		880-1⅔ 484 (500-1⅔)	
CIRCLING		920-1 498 (500-1)	1040-1 618 (700-1)	1040-1¾ 618 (700-1¾)	1040-2 618 (700-2)