

WAAS CH 53704 W05A	APP CRS 046°	Rwy Idg TDZE Apt Elev 5501 575 583
--	------------------------	--

RNAV (GPS) RWY 5

FREEMAN MUNI (SE.R)

▼

NA

Baro-VNAV NA when using Louisville Muhammad Ali Intl altimeter setting. For uncompensated Baro-VNAV systems, LNAV/VNAV NA below -16°C (4°F) or above 54°C (130°F). When local altimeter setting not received, use Louisville Muhammad Ali Intl altimeter setting and increase all DA 117 feet and all MDA 120 feet; increase LPV all Cats visibility ¾ mile, LNAV/VNAV all Cats and Circling Cat C/D visibility ½ mile and LNAV Cat C/D visibility ¼ mile. For inoperative ODALS, increase LNAV/VNAV all Cats visibility to ½ miles and LNAV Cat C/D visibility to 1¼ miles. DME/DME RNP-0.3 NA. VDP NA with Louisville Muhammad Ali Intl altimeter setting. For inoperative ODALS when using Louisville Muhammad Ali Intl altimeter setting, increase LNAV/VNAV all Cats visibility to 2 miles and LNAV Cat C/D visibility to 1½ miles. Helicopter visibility reduction below ¾ SM NA.

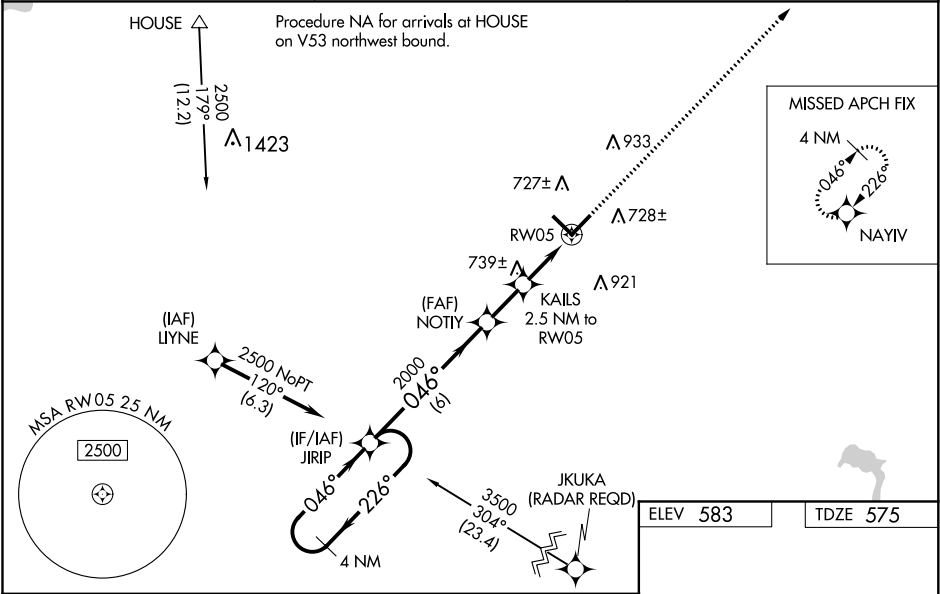
ODALS

☀

⋮

MISSED APPROACH:
Climb to 2400 direct
NAYIV and hold.

AWOS-3 119.425	INDIANAPOLIS CENTER 124.775 269.45	UNICOM 122.8 (CTAF) 0
--------------------------	--	---------------------------------



4 NM Holding Pattern

VGSI and RNAV glidepath not coincident (VGSI Angle 3.00/TCH 32).

2400 NAYIV

ELEV 583

TDZE 575

CATEGORY	A	B	C	D
LPV DA	825-¾ 250 (300-¾)			
LNAV/VNAV DA	1020-1¾ 445 (500-1¾)			
LNAV MDA	1000-¾ 425 (500-¾)	1000-1½ 425 (500-1½)		
CIRCLING	1040-1 457 (500-1)	1080-1 497 (500-1)	1300-2 717 (800-2)	1300-2¼ 717 (800-2¼)

MRL Rwy 5-23 and 14-32 0

REIL Rwy 5, 14, 23 and 32 0