

LOC/DME I-RHX <u>109.35</u> Chan 30 (Y)	APP CRS 223°	Rwy Idg 9000 TDZE 1077 Apt Elev 1077
---	------------------------	---

ILS RWY 22L (CAT II)
WILMINGTON AIR PARK (ILN)

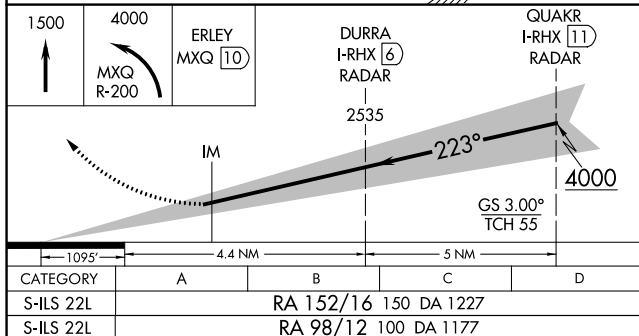
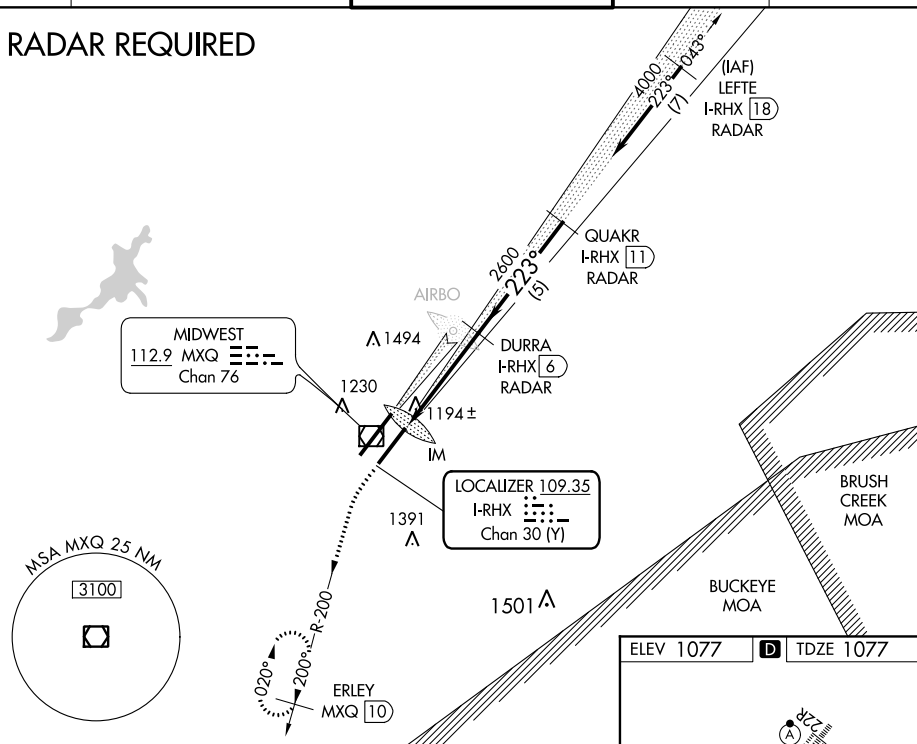
T DME required.
A Simultaneous approach authorized with Rwy 22R.
Procedure NA when tower closed.

ALSF2

MISSED APPROACH: Climb to 1500, then climbing left turn to 4000 via MXQ R-200 to ERLEY/MXQ 10 DME and hold.

ATIS 124.925	COLUMBUS APP CON 118.85 269.275	WILMINGTON TOWER ★ 119.475 (CTAF) 0	GND CON 121.6	CLNC DEL 128.85
------------------------	---	---	-------------------------	---------------------------

RADAR REQUIRED



CATEGORY II ILS - SPECIAL AIRCREW & AIRCRAFT CERTIFICATION REQUIRED

