

LOC I-ILN 110.7	APP CRS 223°	Rwy Idg 10701 TDZE 1077 Apt Elev 1077
---------------------------	------------------------	--

ILS RWY 22R (CAT II & III)
WILMINGTON AIR PARK (ILN)

DME or RADAR required for procedure entry.



Simultaneous approach authorized.
 Procedure NA when control tower closed.
 DME from MXQ VOR/DME.
 Simultaneous reception of I-ILN and MXQ DME required.

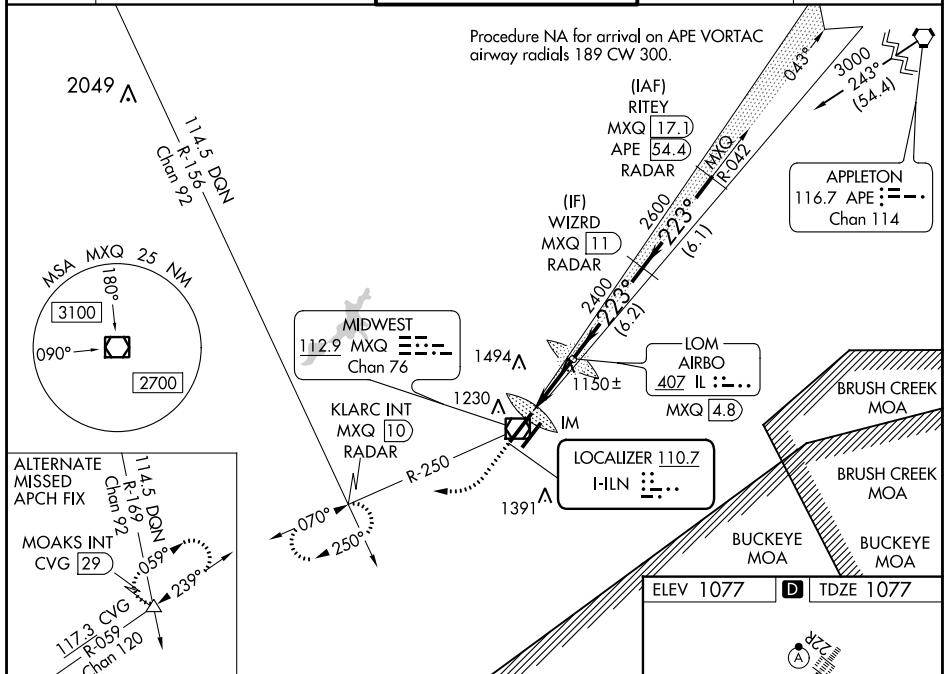
ALSF-2



MISSED APPROACH: Climb to 1600 then climbing right turn to 3500 on MXQ VOR/DME R-250 to KLARC INT/MXQ 10 DME/RADAR and hold, continue climb-in-hold to 3500.

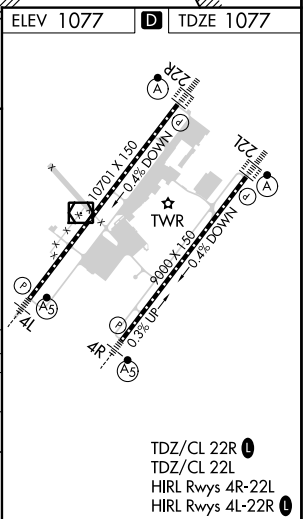
ATIS 124.925	COLUMBUS APP CON 118.85 269.275	WILMINGTON TOWER ★ 119.475 (CTAF) 0	GND CON 121.6	CLNC DEL 128.85
------------------------	---	---	-------------------------	---------------------------

Procedure NA for arrival on APE VORTAC
airway radials 189 CW 300.



1600 ↑	3500 ↻ MXQ R-250	KLARC INT MXQ <u>10</u> RADAR	VGS1 and IL5 glidepath not coincident (VGS1 Angle 3.00/TCH 71).	
		AIRBO LOM MXQ <u>4.8</u>	WIZRD INT MXQ <u>11</u> RADAR	
CATEGORY	A	B	C	D
S-ILS 22R	CAT II RA 106/12 100 DA 1177			
S-ILS 22R	CAT III RVR 06			

CATEGORY II & III ILS - SPECIAL AIRCREW
& AIRCRAFT CERTIFICATION REQUIRED



ILS RWY 22R (CAT II & III)