

LOC I-ILN <b>110.7</b>	APP CRS <b>223°</b>	Rwy Idg <b>10701</b> TDZE <b>1077</b> Apt Elev <b>1077</b>
---------------------------	------------------------	--

**ILS RWY 22R (SA CAT I)**  
**WILMINGTON AIR PARK (ILN)**

DME or RADAR required for procedure entry.



Simultaneous approach authorized. Requires specific OPSPEC, MSPEC, or LOA approval and use of HUD to DH. Procedure NA when control tower closed. DME from MXQ VOR/DME. Simultaneous reception of I-ILN and MXQ DME required.

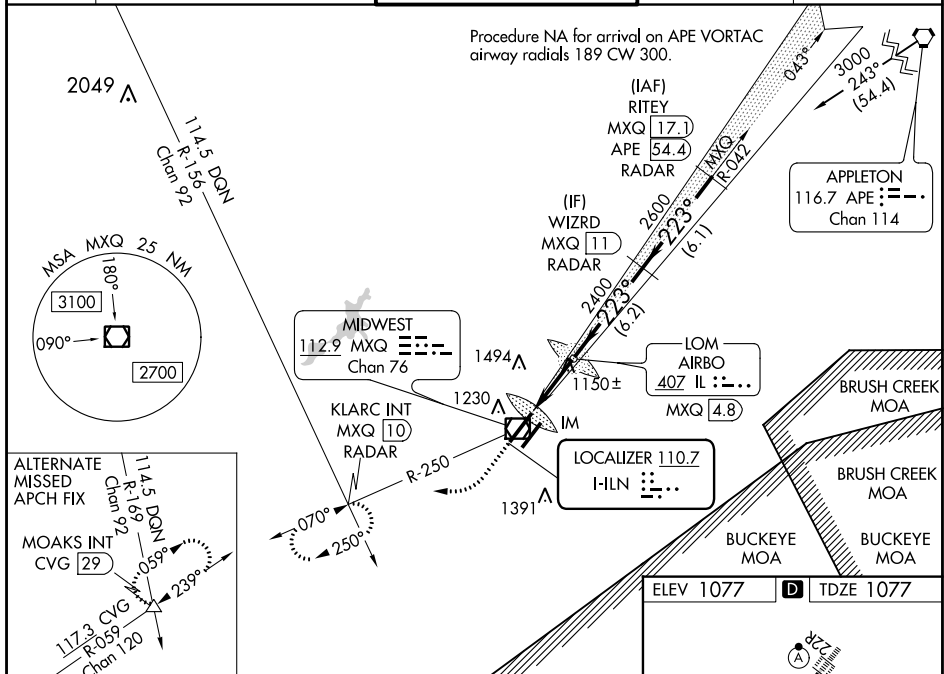
ALSF-2



**MISSED APPROACH:** Climb to 1600 then climbing right turn to 3500 on MXQ VOR/DME R-250 to KLARC INT/MXQ 10 DME/RADAR and hold, continue climb-in-hold to 3500.

ATIS <b>124.925</b>	COLUMBUS APP CON <b>118.85 269.275</b>	WILMINGTON TOWER ★ <b>119.475 (CTAF) 0</b>	GND CON <b>121.6</b>	CLNC DEL <b>128.85</b>
------------------------	---	---	-------------------------	---------------------------

Procedure NA for arrival on APE VORTAC  
airway radials 189 CW 300.



1600 3500

KLARC INT MXQ 10 RADAR

VGS1 and ILS glidepath not coincident (VGS1 Angle 3.00/TCH 71).

WIZRD INT MXQ 11 RADAR

AIRBO LOM MXQ 4.8

IM

223°

2400

2600

GS 3.00° TCH 55

1125° 3.8 NM 6.2 NM

CATEGORY	A	B	C	D
S-ILS 22R	RA 148/14 150 DA 1227			

SA CATEGORY I ILS - SPECIAL AIRCREW  
& AIRCRAFT CERTIFICATION REQUIRED

