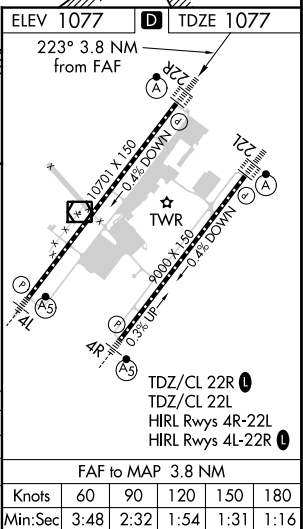


ILS or LOC RWY 22R
WILMINGTON AIR PARK (ILN)

MISSED APPROACH:
Climb to 1600 then
climbing right turn to
3500 on MXQ VOR/
DME R-250 to KLARC
INT/MXQ 10 DME/
RADAR and hold,
continue climb-in-hold
to 3500.

T Simultaneous approach authorized. VDP NA with James M Cox Dayton Intl
A altimeter setting. When local altimeter setting not received, use James M Cox
Dayton Intl altimeter setting: increase DA to 1367 feet and all visibilities to
RVR 2200; increase all MDA 100 feet and S-LOC 22R visibility Cat C/D to
RVR 4000 and Circling Cat C/D ½ SM. For inop ALS when using James M
Cox Dayton Intl altimeter setting, increase S-ILS 22R all Cats visibility to RVR
4500 and S-LOC 22R Cats C/D visibility to 1¼ SM. DME from MXQ
VOR/DME. Simultaneous reception of IJLN and MXQ DME required.

GND CON
121 6



EC-2, 31 DEC 2020 to 28 JAN 2021