
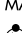
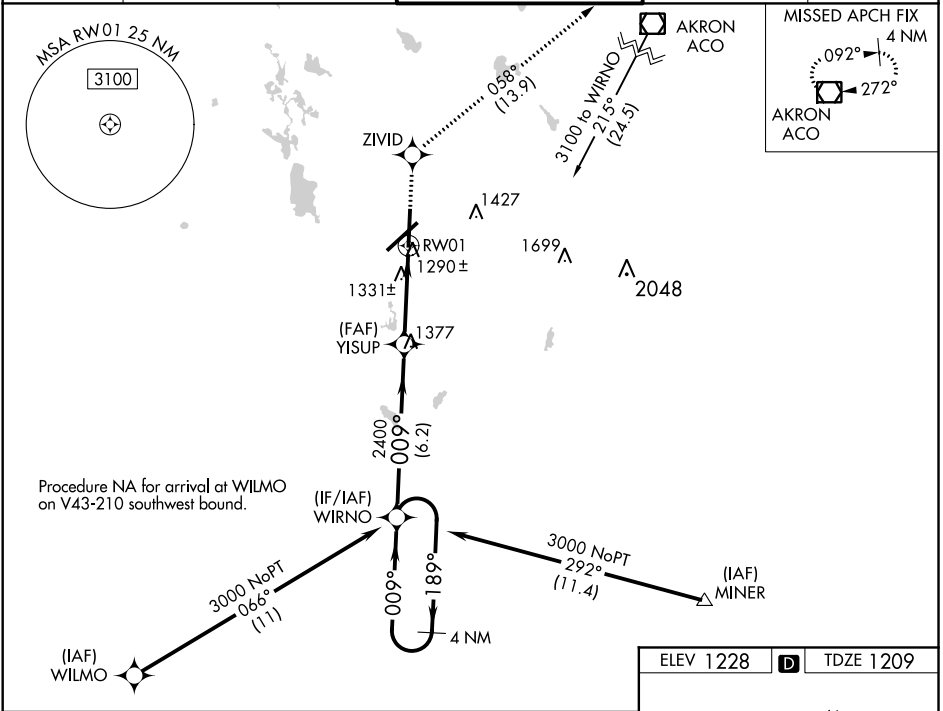


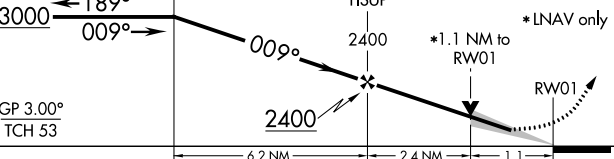
WAAS CH 70420 W01A	APP CRS 009°	Rwy Idg TDZE 1209 Apt Elev 1228
--	------------------------	---

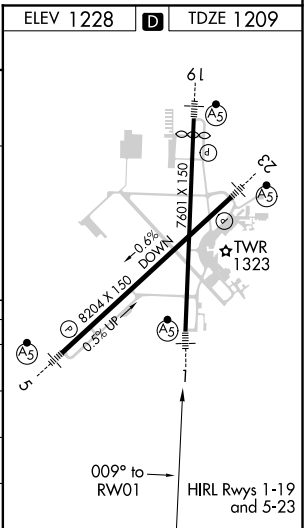
RNAV (GPS) RWY 1
AKRON-CANTON RGNL (CAK)

 For uncompensated Baro-VNAV systems, LNAV/VNAV NA below -17°C (2°F) or above 45°C (113°F). DME/DME RNP-0.3 NA. ** RVR 1800 authorized with use of FD or AP or HUD to DA.	 MALSR	MISSED APPROACH: Climb to 3000 direct ZIVID and on track 058° to ACO VOR/DME and hold.
---	---	--

ATIS 121.05	CLEVELAND APP CON * 125.5 269.25	AKRON-CANTON TOWER 134.75 279.575	GND CON 121.7 348.6	CLNC DEL 132.05
-----------------------	--	---	-------------------------------	---------------------------



4 NM Holding Pattern				
WIRNO				
				
CATEGORY	A	B	C	D
LPV DA**	1409/24 200 (200-½)			
LNAV/VNAV DA	1542/40 333 (400-¾)			
LNAV MDA	1600/24 391 (400-½)			1600/50 391 (400-1)
CIRCLING	1760-1 532 (600-1)	1760-1½ 532 (600-1½)		1780-2 552 (600-2)



EC-2, 31 DEC 2020 to 28 JAN 2021

EC-2, 31 DEC 2020 to 28 JAN 2021