

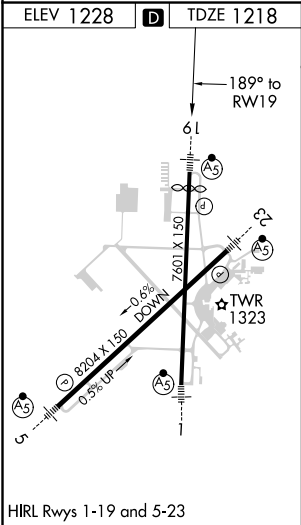
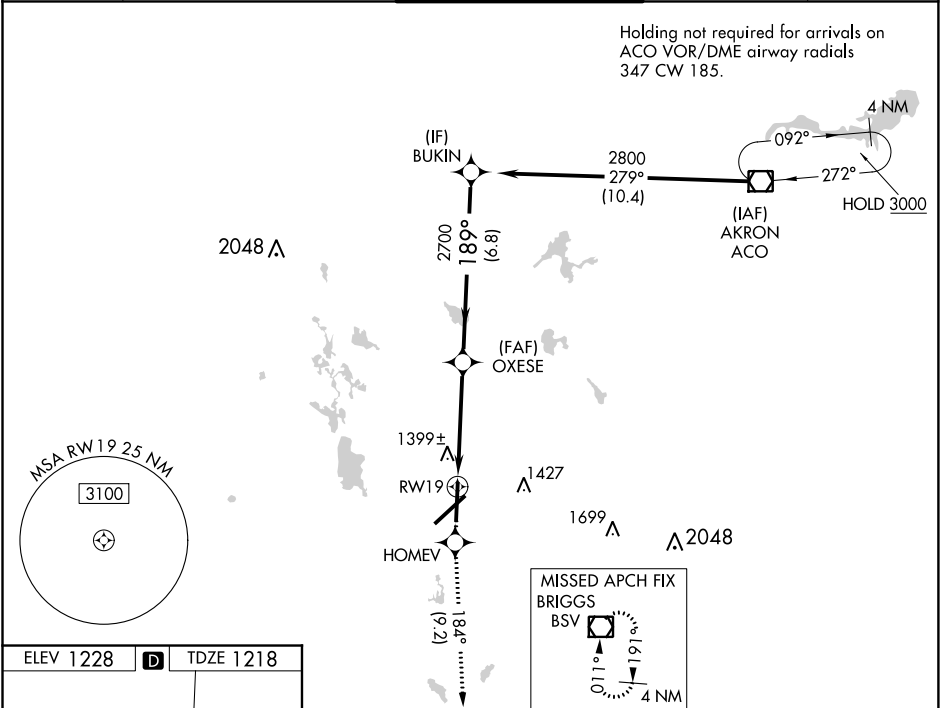
WAAS CH 58020 W19A	APP CRS 189°	Rwy Idg TDZE Apt Elev	7000 1218 1228
--	------------------------	-----------------------------	---

RNAV (GPS) RWY 19

AKRON-CANTON RGNL (CAK)

<div><div>⚠</div><div>For uncompensated Baro-VNAV systems, LNAV/VNAV NA below -17°C (2°F) or above 46°C (114°F). DME/DME RNP-0.3 NA. ** RVR 1800 authorized with use of FD or AP or HUD to DA.</div></div>	<div><div>MALSR</div><div></div></div>	<div>MISSED APPROACH: Climb to 3000 direct HOMEV and on track 184° to BSV VOR/DME and hold.</div>
--	--	---

ATIS 121.05	CLEVELAND APP CON * 125.5 269.25	AKRON-CANTON TOWER 134.75 279.575	GND CON 121.7 348.6	CLNC DEL 132.05
-----------------------	--	---	-------------------------------	---------------------------



3000	HOMEV	tr 184°	BSV					Procedure Turn NA
* LNAV only								GP 3.00° TCH 53
CATEGORY		A		B		C		D
LPV DA		**1418/24 200 (200-½)						
LNAV/ VNAV DA		1753-1½ 535 (600-1½)						
LNAV MDA		1700/24 482 (500-½)			1700/40 482 (500-¾)		1700/50 482 (500-1)	
CIRCLING		1760-1 532 (600-1)			1760-1½ 532 (600-1½)		1780-2 552 (600-2)	