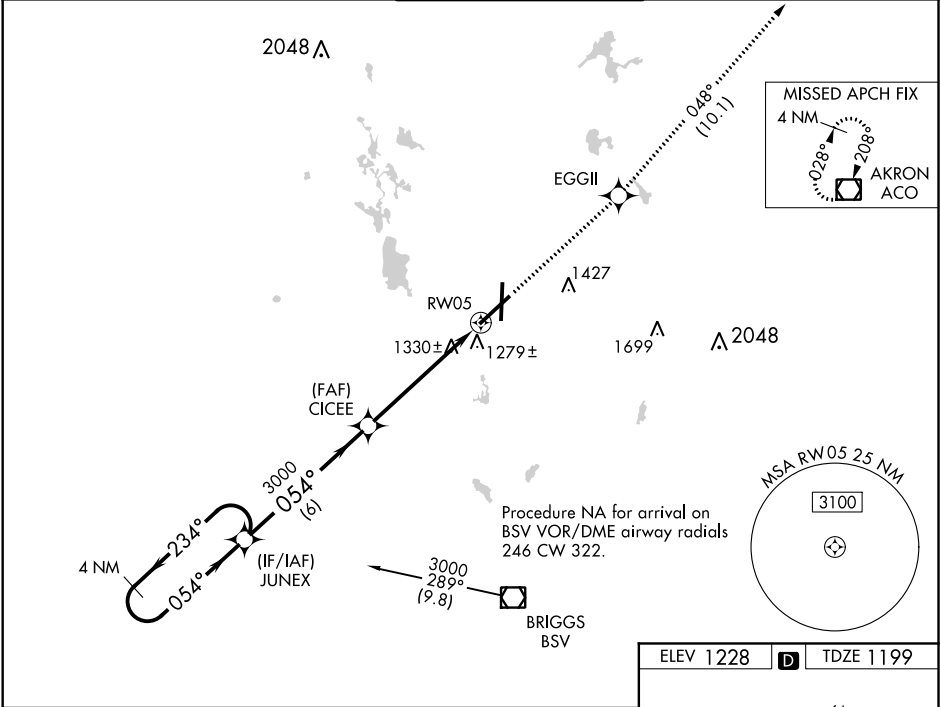


WAAS CH <b>77620</b> <b>W05A</b>	APP CRS <b>054°</b>	Rwy Idg TDZE <b>1199</b> Apt Elev <b>1228</b>
--	------------------------	---

RNAV (GPS) RWY 5

AKRON-CANTON RGNL (CAK)

<div><div>▼</div><div>For uncompensated Baro-VNAV systems, LNAV/VNAV NA below -17°C (2°F) or above 46°C (114°F). DME/DME RNP-0.3 NA. ** RVR 1800 authorized with use of FD or AP or HUD to DA.</div></div>	<div><div>MALSR</div><div><div></div><div></div></div></div>	MISSED APPROACH: Climb to 3000 direct EGGII and on track 048° to ACO VOR/DME and hold.			
		ATIS 121.05	CLEVELAND APP CON ★ 125.5 269.25	AKRON-CANTON TOWER 134.75 279.575	GND CON 121.7 348.6



4 NM Holding Pattern				
<div><div>3000</div><div>←234°</div><div>→054°</div><div>3000</div><div>←054°</div><div>→054°</div><div>3000</div></div> <div>GP 3.00° TCH 50</div> <div>6 NM      4.2 NM      1.3 NM</div>				
CATEGORY	A	B	C	D
LPV DA	**1399/24		200 (200-½)	
LNAV/VNAV DA	1577/50		378 (400-1)	
LNAV MDA	1640/24	441 (500-½)	1640/40 441 (500-¾)	1640/50 441 (500-1)
CIRCLING	1760-1	532 (600-1)	1760-1½ 532 (600-½)	1780-2 552 (600-2)

