

VOR/DME ACO	APP CRS	Rwy Idg	8204
114.4	227°	TDZE	1226
Chan 91		Apt Elev	1228

VOR RWY 23
AKRON-CANTON RGNL (CAK)

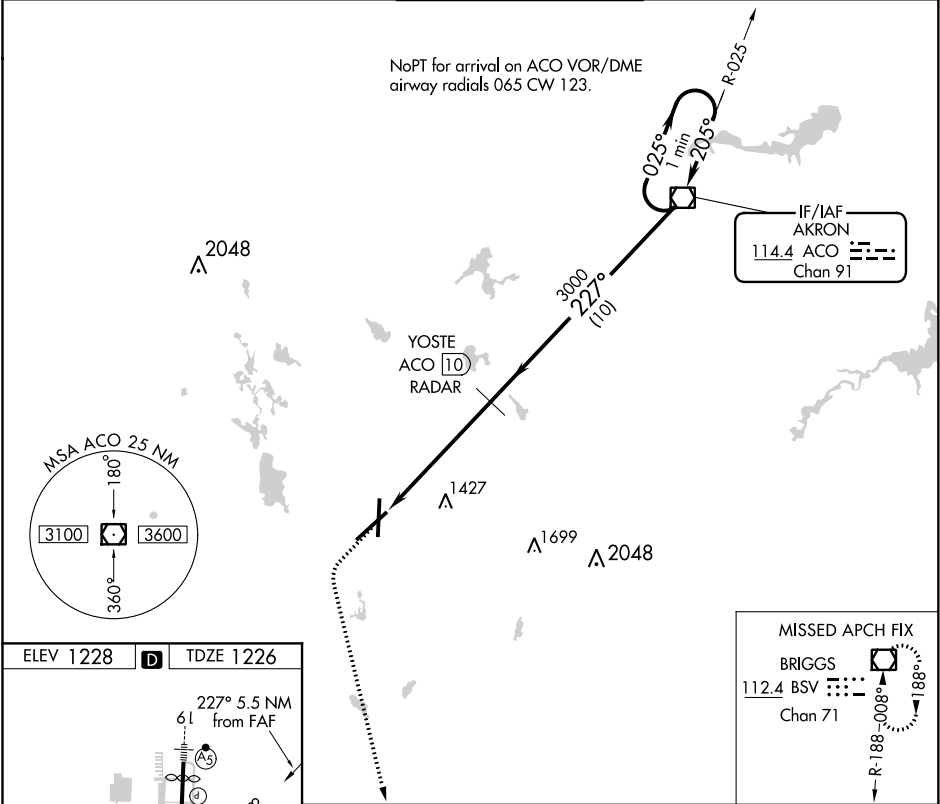
T

DME or RADAR required.

MALSR

MISSED APPROACH: Climb to 3000 then left turn direct BSV VOR/DME and hold.

ATIS 121.05	CLEVELAND APP CON * 125.5 269.25	AKRON-CANTON TOWER 134.75 279.575	GND CON 121.7 348.6	CLNC DEL 132.05
----------------	-------------------------------------	--------------------------------------	------------------------	--------------------



ELEV 1228

TDZE 1226

Knots	60	90	120	150	180
Min:Sec	5:30	3:40	2:45	2:12	1:50

<div><div>3000</div><div><div><div><div></div><div></div></div><div><div></div><div></div></div><div><div></div><div></div></div></div><div>BSV</div><div><div>YOSTE</div><div>ACO</div><div>10</div><div>RADAR</div></div><div><div>ACO</div><div>VOR/DME</div></div><div>One Minute Holding Pattern</div></div></div>				
<div><div><div><div>ACO</div><div>14.2</div></div><div><div>ACO</div><div>15.5</div></div></div><div><div>3000</div><div>227°</div><div>025°</div><div>205°</div><div>3000</div></div><div><div>2.98</div><div>TCH 47</div></div><div><div>1.3</div><div>4.2 NM</div><div>10 NM</div></div></div>				
CATEGORY	A	B	C	D
S-23	1680/24 454 (500-½)		1680/40 454 (500-¾)	1680/50 454 (500-1)
CIRCLING	1760-1 532 (600-1)		1760-1½ 532 (600-1½)	1780-2 552 (600-2)