

WAAS CH 70405 W18A	APP CRS 185°	Rwy Idg TDZE Apt Elev	6499 813 813
--	------------------------	-----------------------------	---

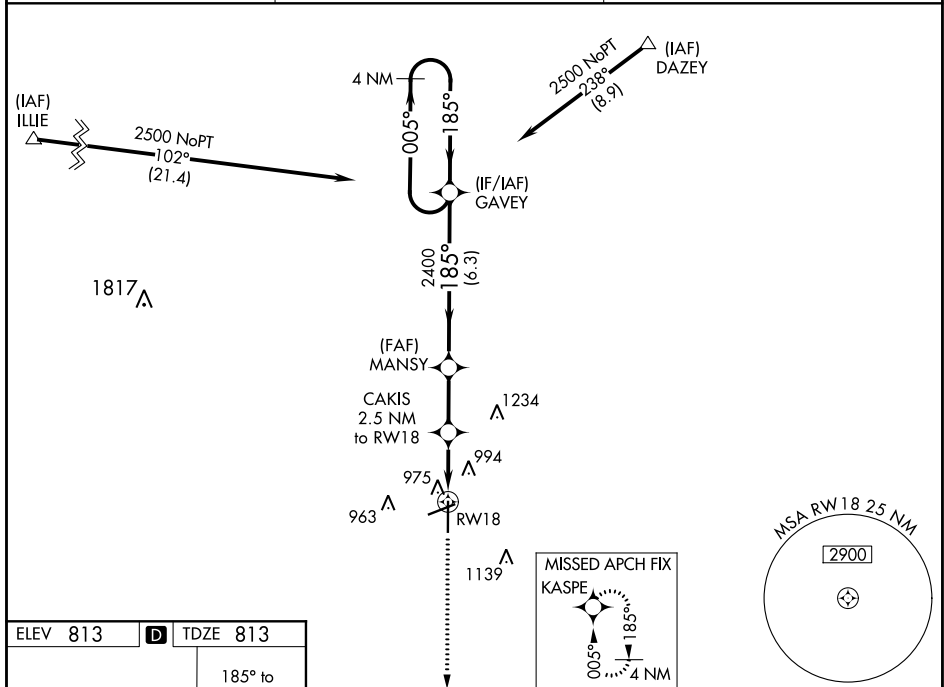
RNAV (GPS) RWY 18
FINDLAY (FDY)

RNP APCH

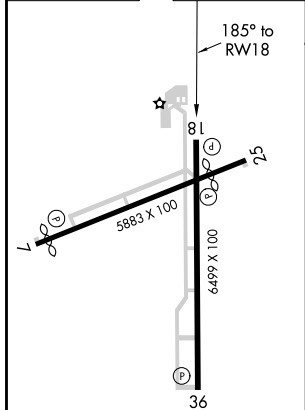
For uncompensated Baro-VNAV systems, LNAV/VNAV NA below -16°C or above 47°C. Baro-VNAV and VDP NA when using Lima Allen County altimeter setting. When local altimeter setting not received, use Lima Allen County altimeter setting: increase all DAs/MDAs 80 feet; increase LNAV Cat C/D and Circling Cat C/D visibility ¼ SM.



MISSED APPROACH:
Climb to 2600 direct
KASPE and hold.

ASOS 132.85	TOLEDO APP CON 120.8 317.55	UNICOM 122.725 (CTAF) 0
-----------------------	---------------------------------------	-----------------------------------



ELEV 813	D	TDZE 813
----------	----------	----------



<div style="display: flex; justify-content: space-around; align-items: center;"> <div style="text-align: center;"> <p>2600</p> <p>↑</p> </div> <div style="text-align: center;"> <p>KASPE</p>  </div> </div>		<div style="display: flex; justify-content: space-between; align-items: center;"> <div> <p>*LNAV only</p> <p>CAKIS 2.5 NM to RW18</p> </div> <div> <p>MANSY 2400</p> </div> <div> <p>GAVEY 4 NM Holding Pattern</p> </div> </div>			
<div style="display: flex; align-items: center;"> <div style="text-align: center;"> <p>*1.4 NM to RW18</p>  </div> <div style="margin-left: 20px;"> <p>*1640</p> </div> <div style="margin-left: 20px;"> <p>2400</p> </div> <div style="margin-left: 20px;"> <p>185°</p> </div> <div style="margin-left: 20px;"> <p>005°</p> </div> <div style="margin-left: 20px;"> <p>2500</p> </div> <div style="margin-left: 20px;"> <p>185°</p> </div> <div style="margin-left: 20px;"> <p>GP 3.00° TCH 43</p> </div> </div>		<div style="display: flex; justify-content: space-around; align-items: center;"> <div>1.4 NM</div> <div>1.1 NM</div> <div>2.3 NM</div> <div>6.3 NM</div> </div>			
CATEGORY		A	B	C	D
LPV	DA	1063-1 250 (300-1)			
LNAV/ VNAV	DA	1320-1 ³ / ₄ 507 (600-1 ³ / ₄)			
LNAV	MDA	1300-1	487 (500-1)	1300-1 ³ / ₈ 487 (500-1 ³ / ₈)	1300-1 ¹ / ₂ 487 (500-1 ¹ / ₂)
CIRCLING		1440-1	627 (700-1)	1440-1 ³ / ₄ 627 (700-1 ³ / ₄)	1440-2 627 (700-2)