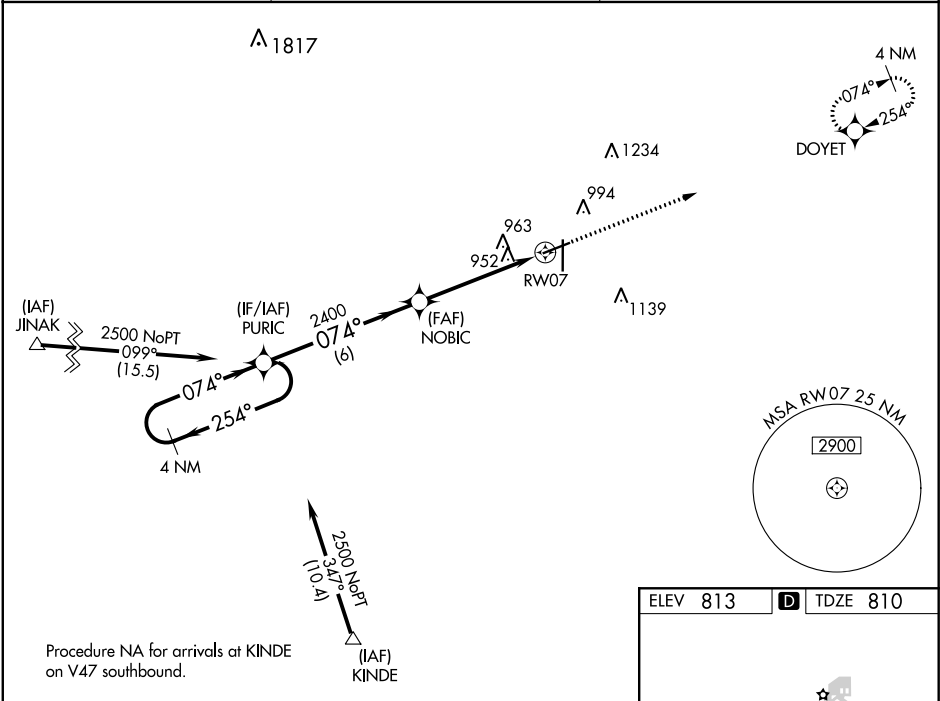


APP CRS	Rwy Idg	4558
074°	TDZE	810
	Apt Elev	813

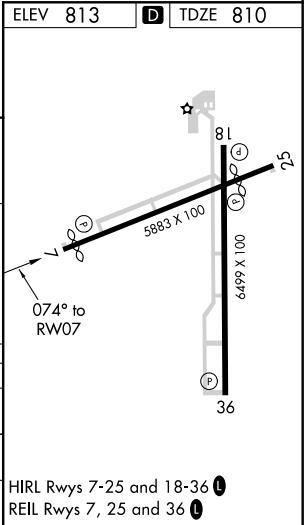
RNAV (GPS) RWY 7  
FINDLAY (FDY)

RNP APCH	For uncompensated Baro-VNAV systems, LNAV/VNAV NA below -1.6°C or above 47°C. Baro-VNAV and VDP NA when using Lima Allen County altimeter setting. Rwy 7 helicopter visibility reduction below ¾ SM NA. When local altimeter setting not received, use Lima Allen County altimeter setting: increase DA to 1377 feet; increase all MDAs 80 feet; increase LNAV Cat C visibility ⅛ SM and Circling Cat C/D visibility ¼ SM.	MISSED APPROACH: Climb to 2500 direct DOYET and hold.
----------	--	---

ASOS 132.85	TOLEDO APP CON 120.8 317.55	UNICOM 122.725 (CTAF) 0
----------------	--------------------------------	----------------------------



4 NM Holding Pattern		VGS and RNAV glidepath not coincident (VGS Angle 3.00/ TCH 24).		2500	DOYET
GP 3.00° TCH 39		PURIC		*LNAV only	
2500		NOBIC		1.4 NM to RW07	
254°		2400		RW07	
074°		6 NM		3.5 NM	
2400		1.4			
CATEGORY	A	B	C	D	
LNAV/ VNAV DA	1297-1¾		487 (500-1¾)		
LNAV MDA	1260-1	450 (500-1)	1260-1¾	1260-1½	
			450 (500-1¾)	450 (500-1½)	
CIRCLING	1440-1	627 (700-1)	1440-1¾	1440-2	
			627 (700-1¾)	627 (700-2)	



EC-2, 31 DEC 2020 to 28 JAN 2021

EC-2, 31 DEC 2020 to 28 JAN 2021