

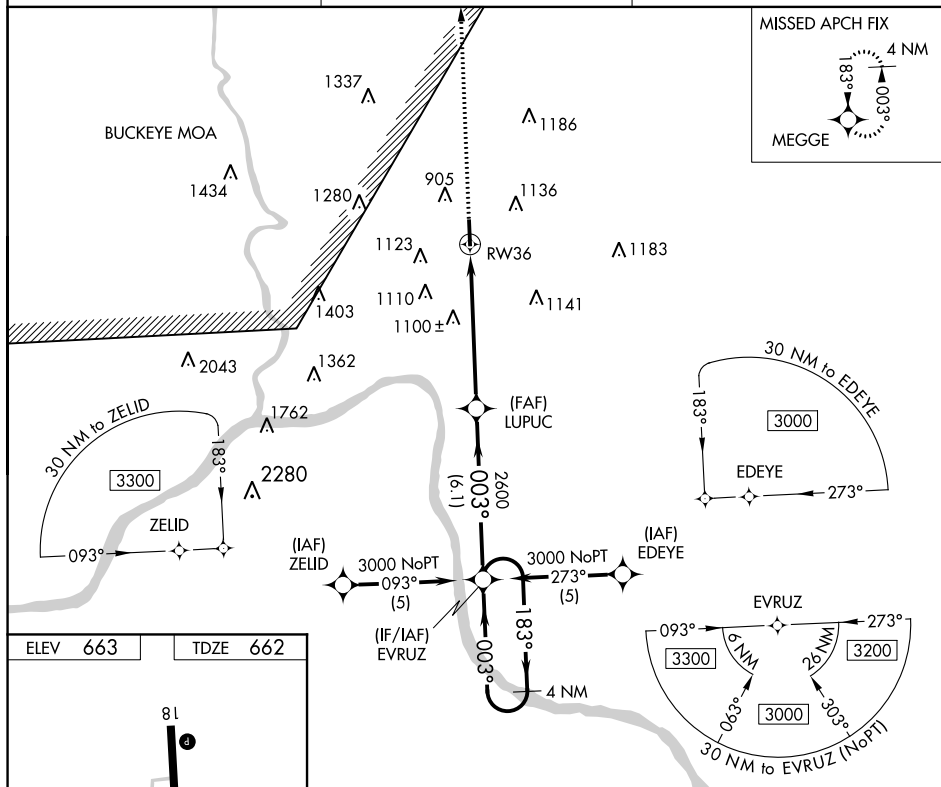
WAAS CH 70408 W36A	APP CRS 003°	Rwy Idg 5001 TDZE 662 Apt Elev 663
--	------------------------	---

RNAV (GPS) RWY 36
GREATER PORTSMOUTH RGNL (PMH)

T When local altimeter setting not received, use Huntington altimeter setting and increase all DA 96 feet and all MDA 100 feet and LPV visibility ¼ mile all Cats, LNAV Cat B visibility ¼ mile, Cat C, D visibility ½ mile, and Circling Cat B visibility ¼ mile, Cat C visibility ½ mile, and Cat D visibility ¼ mile. Visibility reduction by helicopters NA. DME/DME RNP-0.3 NA.

MISSED APPROACH:
Climb to 3000 direct
MEGGE and hold.

AWOS-3 125.175	HUNTINGTON APP CON 128.4 270.1	UNICOM 122.8 (CTAF) 0
--------------------------	--	---------------------------------



3000 ↑	MEGGE ✦	VGSI and RNAV glidepath not coincident (VGSI Angle 3.00/TCH 31).		4 NM Holding Pattern
		EVRUZ 183° → ← 003° 3000 GP 3.00° TCH 40		
CATEGORY	A	B	C	D
LPV DA	912-1 250 (300-1)			
RNAV MDA	1400-1 738 (800-1)	1400-2 738 (800-2)	1400-2¼ 738 (800-2¼)	
CIRCLING	1400-1 737 (800-1)	1400-2 737 (800-2)	1440-2½ 777 (800-2½)	