

WAAS CH 78134 W14A	APP CRS 140°	Rwy Idg TDZE Apt Elev	4002 826 832
--	------------------------	-----------------------------	---

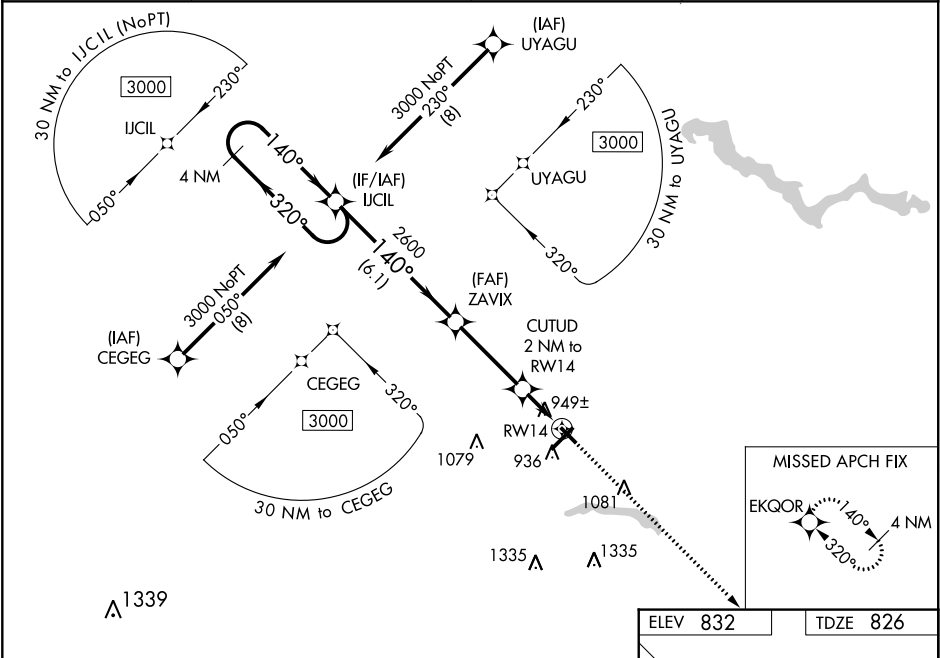
RNAV (GPS) RWY 14

KOKOMO MUNI (OKK)

For uncompensated Baro-VNAV systems, LNAV/VNAV NA below -16°C (4°F) or above 54°C (130°F). DME/DME RNP-0.3 NA. Helicopter visibility reduction below ¾ SM NA.

MISSED APPROACH: Climb to 3000 direct EKGOR and hold.

AWOS-3PT 113.5	GRISSEM APP CON* 121.05 338.275	CLNC DEL 120.0	UNICOM 123.0 (CTAF) 1
--------------------------	---	--------------------------	---------------------------------



4 NM Holding Pattern

VGSI and RNAV glidepath not coincident (VGSI Angle 3.17/TCH 33).

3000 EKGOR

GP 3.00° TCH 52

GP 3.00° TCH 52

6.1 NM 3.4 NM 1 NM 1 NM

CATEGORY	A	B	C	D
LPV DA		1076-1	250 (300-1)	
LNAV/VNAV DA		1199-1¼	373 (400-1¼)	
LNAV MDA		1200-1	374 (400-1)	
CIRCLING	1260-1 428 (500-1)	1300-1 468 (500-1)	1400-1½ 568 (600-1½)	1640-2½ 808 (900-2½)

