

WAAS CH 78139 W05A	APP CRS 050°	Rwy Idg TDZE 832 Apt Elev 824	6001
--	------------------------	---	-------------

RNAV (GPS) RWY 5

KOKOMO MUNI (OKK)

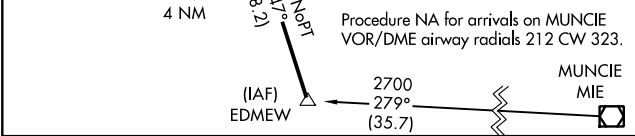
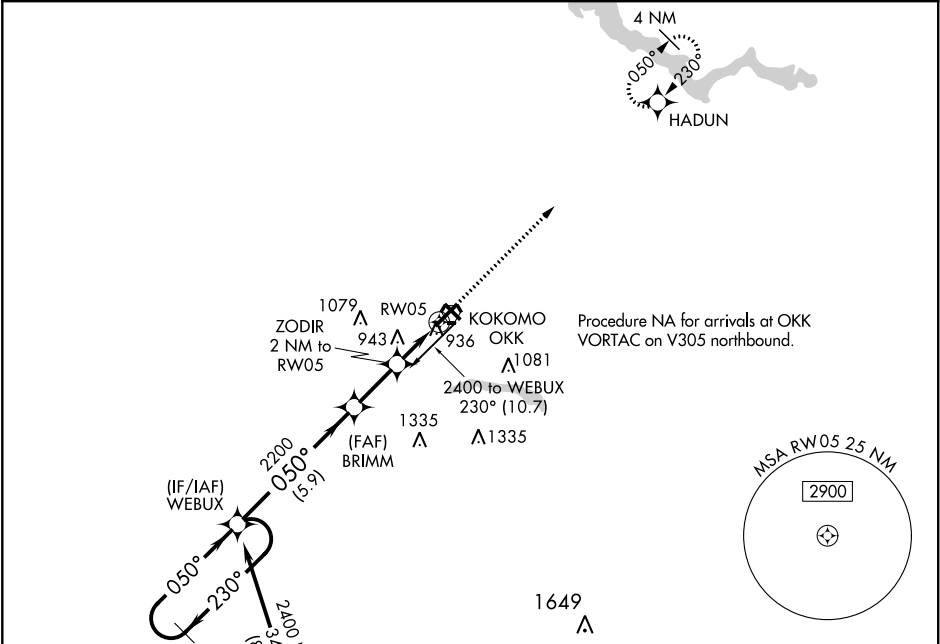
▼

▲

For uncompensated Baro-VNAV systems, LNAV/VNAV NA below -16°C (4°F) or above 54°C (130°F). DME/DME RNP-0.3 NA.

MISSED APPROACH: Climb to 3000 direct HADUN and hold.

AWOS-3PT 113.5	GRISSEM APP CON★ 121.05 338.275	CLNC DEL 120.0	UNICOM 123.0 (CTAF) 0
--------------------------	---	--------------------------	---------------------------------



4 NM Holding Pattern		WEBUX	BRIMM	ZODIR 2 NM to RW05	HADUN
2400 ← 230°		050° →	2200	*1 NM to RW05	*1 NM to RW05
GP 3.00° TCH 35					
VGSIs and RNP glidepath not coincident (VGSIs Angle 3.17/TCH 35).					
		2200	*1500		
		5.9 NM	2.2 NM	1 NM	1 NM
CATEGORY	A	B	C	D	
LPV DA		1082-7/8	250 (300-7/8)		
LNAV/VNAV DA		1102-7/8	270 (300-7/8)		
LNAV MDA		1200-1	368 (400-1)		
CIRCLING	1260-1 428 (500-1)	1300-1 468 (500-1)	1400-1½ 568 (600-1½)	1640-2½ 808 (900-2½)	

