

WAAS CH <b>78323</b> <b>W30A</b>	APP CRS <b>306°</b>	Rwy Idg <b>7959</b> TDZE <b>591</b> Apt Elev <b>597</b>
--	------------------------	---

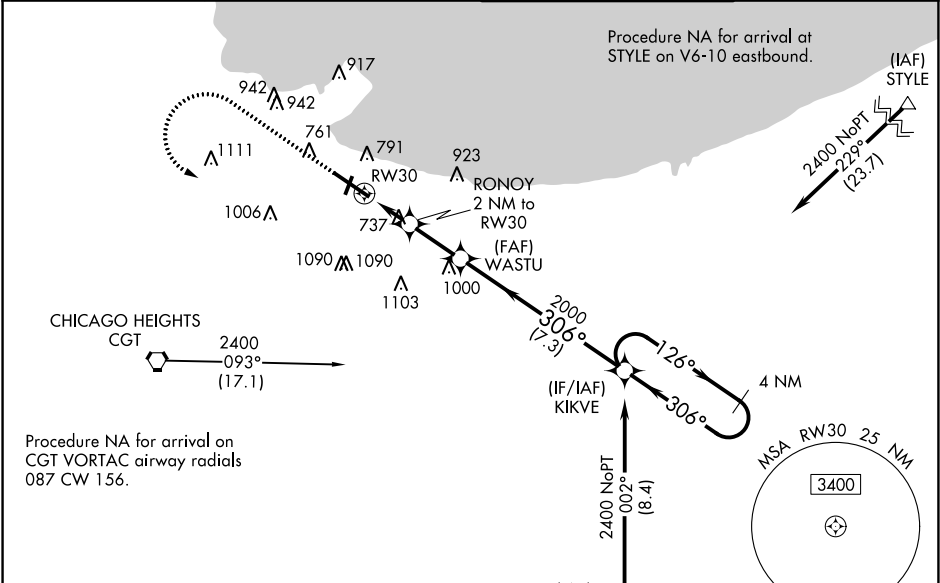
RNAV (GPS) Y RWY 30  
GARY/CHICAGO INTL (GYY)

**⚠** For uncompensated Baro-VNAV systems, LNAV/VNAV NA below -16°C (4°F) or above 54°C (130°F). DME/DME RNP-0.3 NA. When local altimeter setting not received, use Chicago Midway Intl altimeter setting and increase all DA 47 feet and all MDA 60 feet, increase LNAV/VNAV visibility all Cats and LNAV Cats C/D visibility to RVR 5000, increase Circling Cat C/D visibility ¼ mile. Baro-VNAV and VDP NA with Chicago Midway Intl altimeter setting. \*\*RVR 1800 authorized with use of FD or AP or HUD to DA, NA when using Chicago Midway Intl altimeter setting.

**MALSR**

**MISSED APPROACH:**  
Climb to 1100 then climbing left turn to 2400 direct KIKVE and hold.

ATIS <b>134.575</b>	CHICAGO APP CON <b>133.1 285.6</b>	GARY TOWER ★ <b>125.6 (CTAF) 0</b>	GND CON <b>121.9</b>
------------------------	---------------------------------------	---------------------------------------	-------------------------



ELEV 597	<b>D</b>	TDZE 591
----------	----------	----------

REIL Rwy 2, 12 and 20 **0**  
HIRL Rwy 12-30 **0**  
MIRL Rwy 2-20 **0**

CHICAGO HEIGHTS CGT 2400 093° (17.1)

Procedure NA for arrival on CGT VORTAC airway radials 087 CW 156.

<div><div><div>1100</div><div>2400</div></div><div>KIKVE</div></div> <div><div>1731</div><div>BOONE</div></div> <div><div>WASTU</div><div>2000</div></div> <div><div>KIKVE</div><div>4 NM Holding Pattern</div></div>					
<div><div>* LNAV only</div><div>RONOY 2 NM to RW30</div><div>* 1.1 NM to RW30</div><div>RW30</div><div>* 1280</div><div>2000</div><div>126°</div><div>306°</div><div>2400</div><div>GP 3.00</div><div>TCH 57</div></div>					
<div><div>1.1</div><div>0.9</div><div>2.3 NM</div><div>7.3 NM</div></div>					
CATEGORY	A		B	C	D
LPV DA	** 791/24		200 (200-½)		
LNAV/VNAV DA	991/45		400 (400-¾)		
LNAV MDA	1000/24	409 (500-½)	1000/40	409 (500-¾)	
<div>C</div> CIRCLING	1140-1 543 (600-1)	1180-1 583 (600-1)	1400-2¼ 803 (900-2¼)	1420-2¾ 823 (900-2¾)	