

WAAS
CH **82410**
W23A

APP CRS
233°

Rwy Idg
5028

TDZE
623

Apt Elev
626

RNAV (GPS) RWY 23

LAKE COUNTY EXECUTIVE (LNN)

RNP APCH.

▼

Rwy 23 helicopter visibility reduction below ¾ SM NA. For uncompensated Baro-VNAV systems, LNAV/VNAV NA below -16°C or above 54°C.

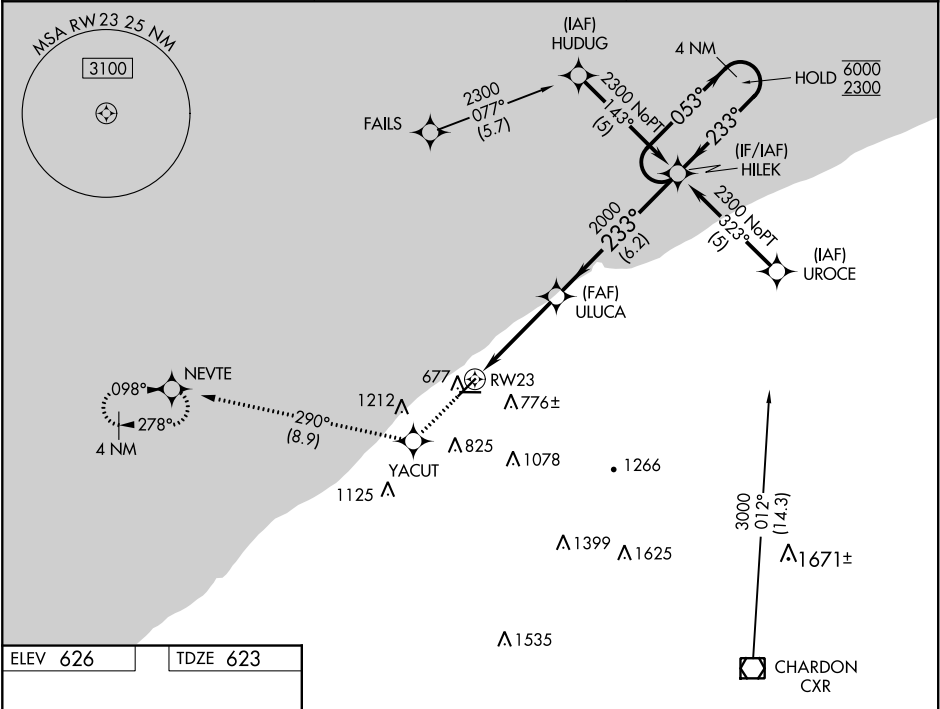
MISSED APPROACH:

Climb to 2300 direct YACUT and on track 290° to NEVTE and hold.

AWOS-3PT
119.225

CLEVELAND APP CON
125.35 346.325

UNICOM
122.725 (CTAF) 0



ELEV 626

TDZE 623

233° to RW23

5028 X 100

4272 X 100

28

675±

816±

2300

YACUT

tr 290°

NEVTE

VGSI and RNAV glidepath not coincident (VGSI Angle 4.00/TCH 54).

ULUCA

HILEK

4 NM Holding Pattern

053°

6000

2300

233°

2000

2000

GP 3.00°

TCH 40

1.2 NM

3 NM

6.2 NM

CATEGORY	A	B	C	D
LPV DA	1031-1½	408 (500-1½)		NA
LNAV/VNAV DA	1142-1¾	519 (600-1¾)		NA
LNAV MDA	1200-1	577 (600-1)	1200-1½ 577 (600-1½)	NA
CIRCLING	1200-1	574 (600-1)	1200-1½ 574 (600-1½)	NA