

APP CRS  
**279°**

Rwy Idg  
TDZE  
Apt Elev

**3148**  
**626**  
**626**

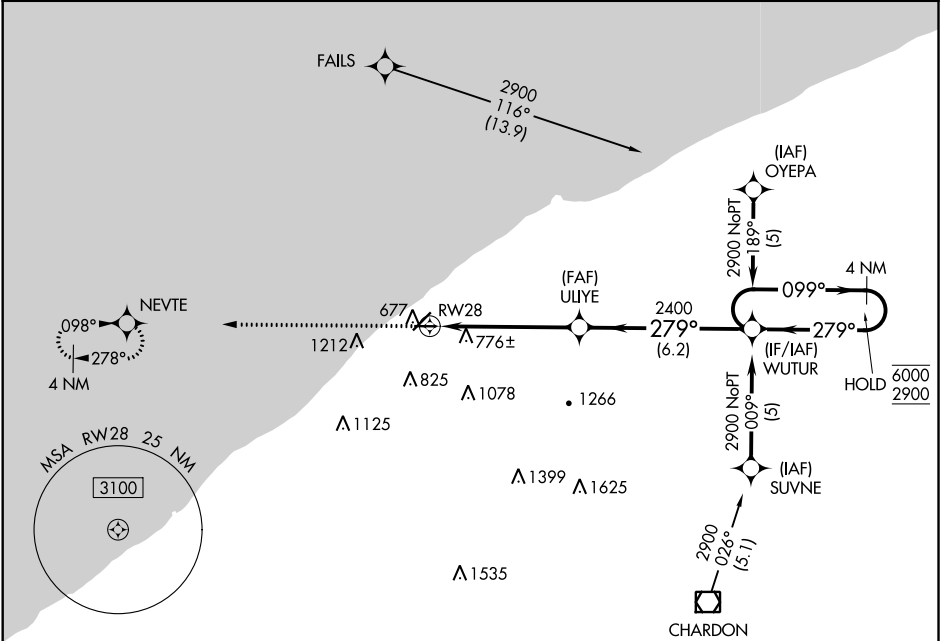
**RNAV (GPS) RWY 28**  
LAKE COUNTY EXECUTIVE (LNN)

RNP APCH.

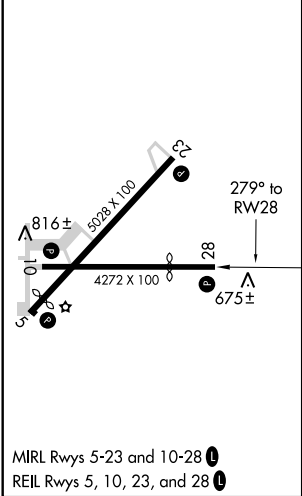
Rwy 28 helicopter visibility reduction below ¾ SM NA.

MISSED APPROACH: Climb to 2300 direct NEVTE and hold.

AWOS-3PT <b>119.225</b>	CLEVELAND APP CON <b>125.35 346.325</b>	UNICOM <b>122.725 (CTAF) 0</b>
----------------------------	--	-----------------------------------



ELEV 626	TDZE 626
----------	----------



2300	NEVTE	VGSI and descent angles not coincident (VGSI Angle 3.50/TCH 26).			
		WUTUR	4 NM Holding Pattern		
		ULIYE	279°	099°	6000 2900
		2400	279°	279°	
		1.6 NM to RWY 28	3.04° TCH 40		
		1.6 NM	3.8 NM	6.2 NM	
CATEGORY	A	B	C	D	
LNAV MDA	1260-1	634 (700-1)	1260-1¾ 634 (700-1¾)	NA	
CIRCLING	1260-1	634 (700-1)	1260-1¾ 634 (700-1¾)	NA	