

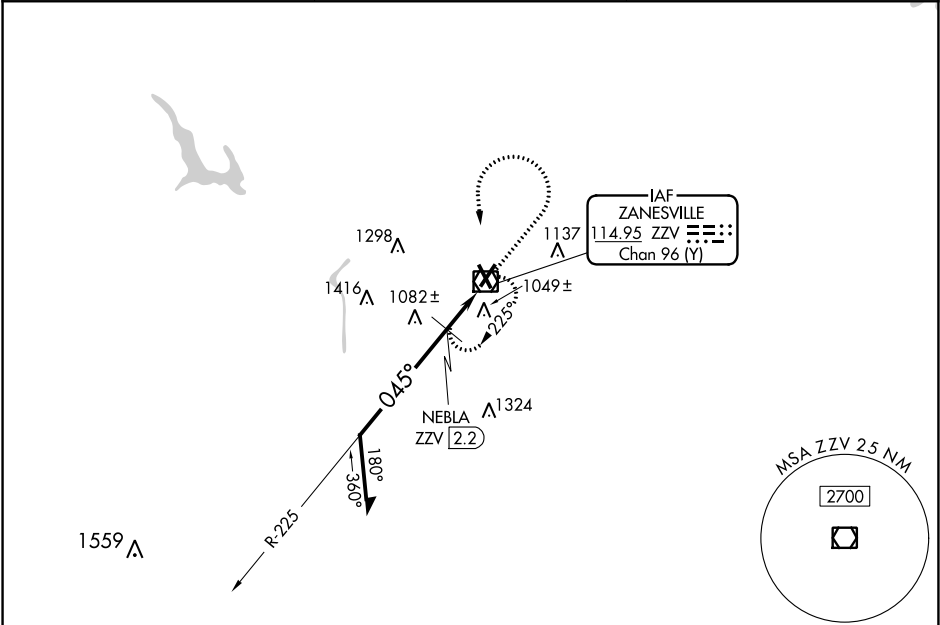
VOR/DME ZZV	APP CRS	Rwy Idg	4999
114.95	045°	TDZE	900
Chan 96 (Y)		Apt Elev	900

VOR RWY 4
ZANESVILLE MUNI (ZZV)

⚠ VDP NA when using Newark altimeter setting.
When local altimeter setting not received, Newark altimeter setting and increase all MDA 80 feet; increase S-4 and Circling Cat B visibility ¼ SM and Cat C/D ½ SM, NEBLA fix minimums increase S-4 Cat C/D visibility ½ SM and Circling Cat C/D ¼ SM.

MISSED APPROACH:
Climb to 3000 then left turn
direct ZZV VOR/DME and hold.

ASOS 114.95	INDIANAPOLIS CENTER 124.45 370.9	UNICOM 123.0 (CTAF) 0*
----------------	-------------------------------------	---------------------------



*1680 when using Newark altimeter setting.

Remain within 10 NM

ZZV VOR/DME 3000

ZZV

2700 225° NEBLA ZZV 2.2

045° 3.12° TCH 35 ZZV 1.4

*1600

0.8 NM 1.2 NM 0.2

CATEGORY	A	B	C	D
S-4	1600-1	700 (700-1)	1600-2	700 (700-2)
CIRCLING	1600-1	700 (700-1)	1620-2 720 (800-2)	1620-2¼ 720 (800-2¼)
NEBLA FIX MINIMUMS				
S-4	1340-1	440 (500-1)	1340-1¼	440 (500-1¼)
CIRCLING	1380-1 480 (500-1)	1400-1 500 (500-1)	1620-2 720 (800-2)	1620-2¼ 720 (800-2¼)

ELEV 900 TDZE 900

045° to ZZV VOR/DME

HIRL Rwy 4-22 0*

MIRL Rwy 16-34

REIL Rwys 4, 16, 22 and 34 0*

EC-2, 31 DEC 2020 to 28 JAN 2021

EC-2, 31 DEC 2020 to 28 JAN 2021