

WAAS CH 58115 W06A	APP CRS 058°	Rwy Idg 9009 TDZE 1051 Apt Elev 1051
--	------------------------	---

RNAV (GPS) RWY 6

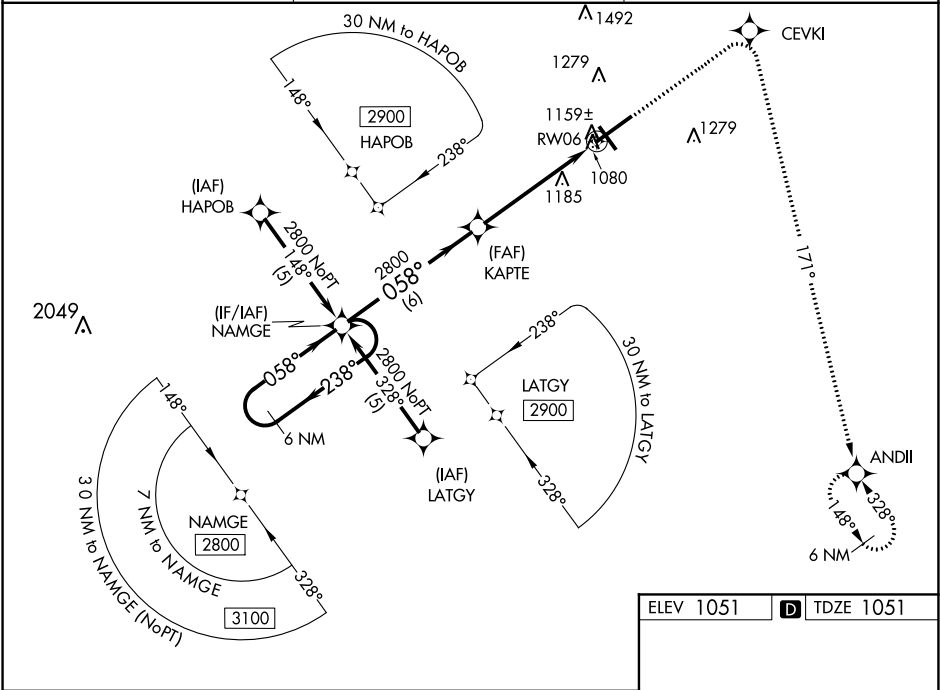
SPRINGFIELD-BECKLEY MUNI (SGH)

⚠

For uncompensated Baro-VNAV systems, LNAV/VNAV NA below -17°C (2°F) or above 46°C (114°F). DME/DME RNP-0.3 NA. Visibility reduction by helicopters NA. When local altimeter setting not received, use Wright-Patterson AFB altimeter setting and increase all DA 55 feet and all MDA 60 feet, and increase LPV all Cats, LNAV/VNAV all Cats, and LNAV Cat C visibilities ¼ mile. VDP and Baro-VNAV NA when using Wright-Patterson AFB altimeter setting.

MISSED APPROACH: Climb to 3000 direct CEVKI and right turn via track 171° to ANDII and hold.

AWOS-3PT 134.975	COLUMBUS APP CON 118.85 269.275	UNICOM 122.95 (CTAF) 1
----------------------------	---	----------------------------------



6 NM Holding Pattern

NAMGE

KAPTE

RW06

ANDII

CEVKI

3000

GP 3.00° TCH 45

*1.3 NM to RW06

*LNAV only

CATEGORY	A	B	C	D
LPV DA	1354-1 303 (400-1)			
LNAV/VNAV DA	1429-1¼ 378 (400-1¼)			
LNAV MDA	1500-1 449 (500-1)	1500-1¼ 449 (500-1¼)	1500-1½ 449 (500-1½)	
CIRCLING	1500-1 449 (500-1)	1520-1 469 (500-1)	1520-1½ 469 (500-1½)	1620-2 569 (600-2)

ELEV 1051

TDZE 1051

HIRL Rwy 6-24 1

MIRL Rwy 15-33 1

REIL Rws 6, 15 and 33 1

EC-2, 31 DEC 2020 to 28 JAN 2021

EC-2, 31 DEC 2020 to 28 JAN 2021