

WAAS CH 53537 W21A	APP CRS 205°	Rwy Idg TDZE 935 Apt Elev 937
--	------------------------	---

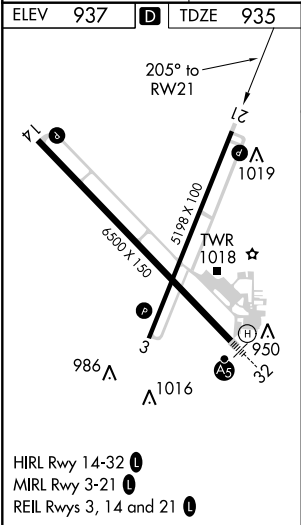
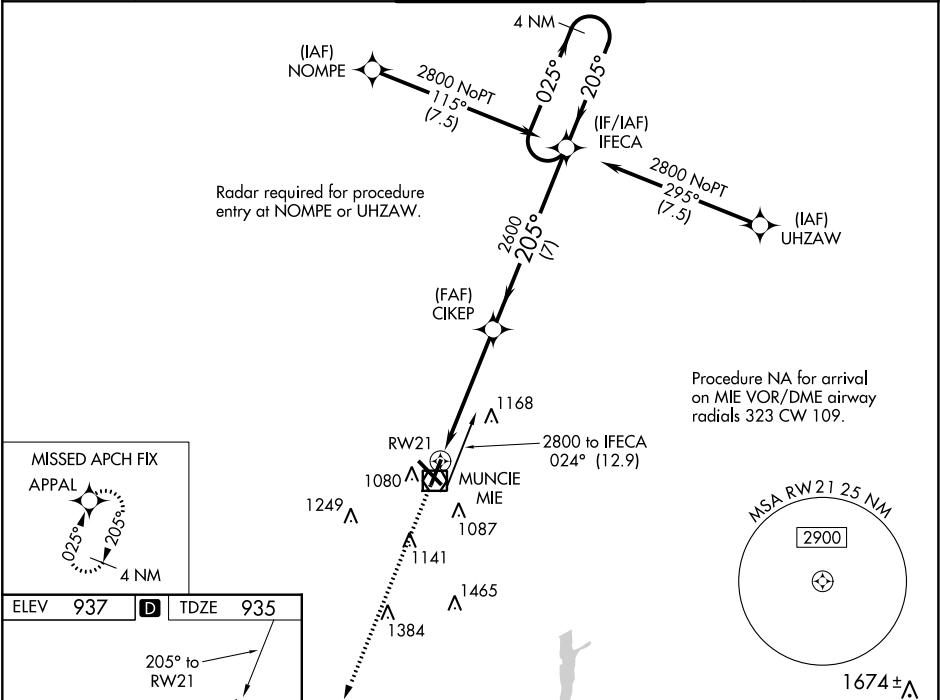
RNAV (GPS) RWY 21

DELAWARE COUNTY RGNL (MIE)

⚠ For uncompensated Baro-VNAV systems, LNAV/VNAV NA below -20°C (-4°F) or above 54°C (130°F). DME/DME RNP-0.3 NA. When local altimeter setting not received, use Fort Wayne Intl altimeter setting and increase all DA 121 feet and all MDA 140 feet; increase LPV all Cats and LNAV Cats C/D visibility ¾ mile and LNAV/VNAV all Cats and Circling Cats C/D visibility ½ mile. Baro-VNAV and VDP NA when using Fort Wayne Intl altimeter setting. Helicopter visibility reduction below ¾ SM NA.

MISSED APPROACH:
Climb to 2800 direct APPAL and hold.

ATIS 133.25	INDIANAPOLIS CENTER 120.65 317.8	MUNCIE TOWER ★ 120.1 (CTAF) 0	GND CON 121.9	UNICOM 122.95
-----------------------	--	---	-------------------------	-------------------------



2800	APPAL	*LNAV only	CIKEP	IFECA	4 NM Holding Pattern
		*1.3 NM to RW21	2600	2600	2800
				025°	205°
				GP 3.00°	TCH 45
				1.3	3.8 NM
				7 NM	
CATEGORY	A	B	C	D	
LPV DA		1195-7/8	260 (300-%)		
LNAV/VNAV DA		1351-13/8	416 (500-1%)		
LNAV MDA	1400-1	465 (500-1)	1400-13/8	465 (500-1%)	
CIRCLING	1460-1	523 (600-1)	1500-11/2	1600-2	563 (600-11/2) 663 (700-2)