

MUNCIE, INDIANA

AL-5011 (FAA)

19003

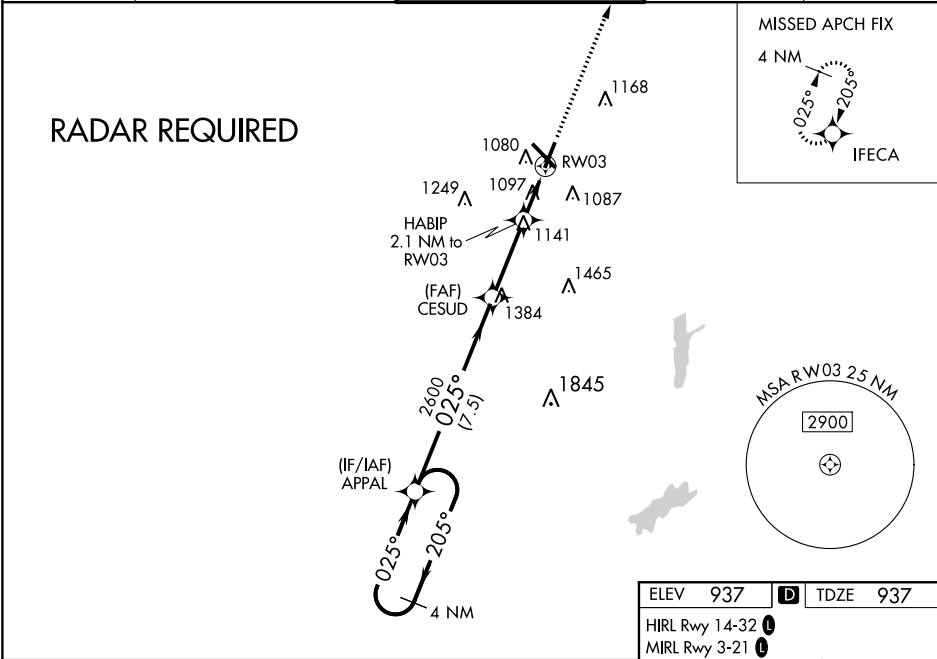
WAAS CH 78237 W03A	APP CRS 025°	Rwy Idg TDZE 937 Apt Elev 937
--	------------------------	---

RNAV (GPS) RWY 3
DELAWARE COUNTY RGNL (MIE)

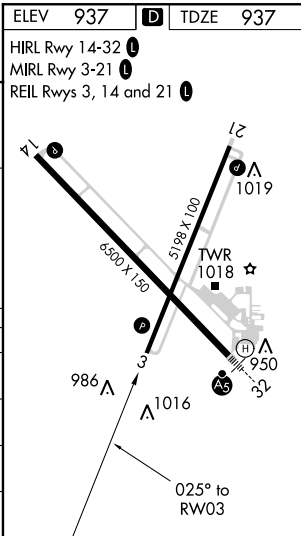
⚠ For uncompensated Baro-VNAV systems, LNAV/VNAV NA below -20°C (-4°F) or above 54°C (130°F). DME/DME RNP-0.3 NA. When local altimeter setting not received, use Fort Wayne Intl altimeter setting and increase all DA 121 feet and all MDA 140 feet; increase LPV all Cats and LNAV Cats C/D visibility ¾ mile, LNAV/VNAV all Cats visibility ¾ mile and Circling Cats C/D visibility ½ mile. Baro-VNAV NA when using Fort Wayne Intl altimeter setting. Helicopter visibility reduction below ¾ SM NA.

MISSED APPROACH:
Climb to 2800 direct IFECA and hold.

ATIS 133.25	INDIANAPOLIS CENTER 120.65 317.8	MUNCIE TOWER ★ 120.1 (CTAF) 0	GND CON 121.9	UNICOM 122.95
-----------------------	--	---	-------------------------	-------------------------



4 NM Holding Pattern		APPAL		CESUD		HABIP 2.1 NM to RW03		2800 ↑ IFECA	
2800		← 205° 2800 → 025°		025°		2600		*LNAV only.	
GP 3.00° TCH 39°				2600		*1.2 NM to RW03		RW03	
		7.5 NM		3 NM		0.9 NM		1.2 NM	
CATEGORY	A		B		C		D		
LPV DA			1190-7 ⁸		253 (300-7 ⁸)				
LNAV/ VNAV DA			1412-1 ⁵ ⁸		475 (500-1 ⁵ ⁸)				
LNAV MDA	1360-1		423 (500-1)		1360-1 ¹ ⁴		423 (500-1 ¹ ⁴)		
CIRCLING	1460-1		523 (600-1)		1500-1 ¹ ² 563 (600-1 ¹ ²)		1600-2 663 (700-2)		



MUNCIE, INDIANA
Orig 05MAR15

40°15'N-85°24'W

DELAWARE COUNTY RGNL (MIE)
RNAV (GPS) RWY 3

EC-2, 31 DEC 2020 to 28 JAN 2021

EC-2, 31 DEC 2020 to 28 JAN 2021