

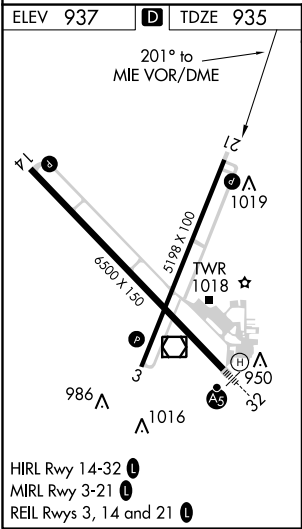
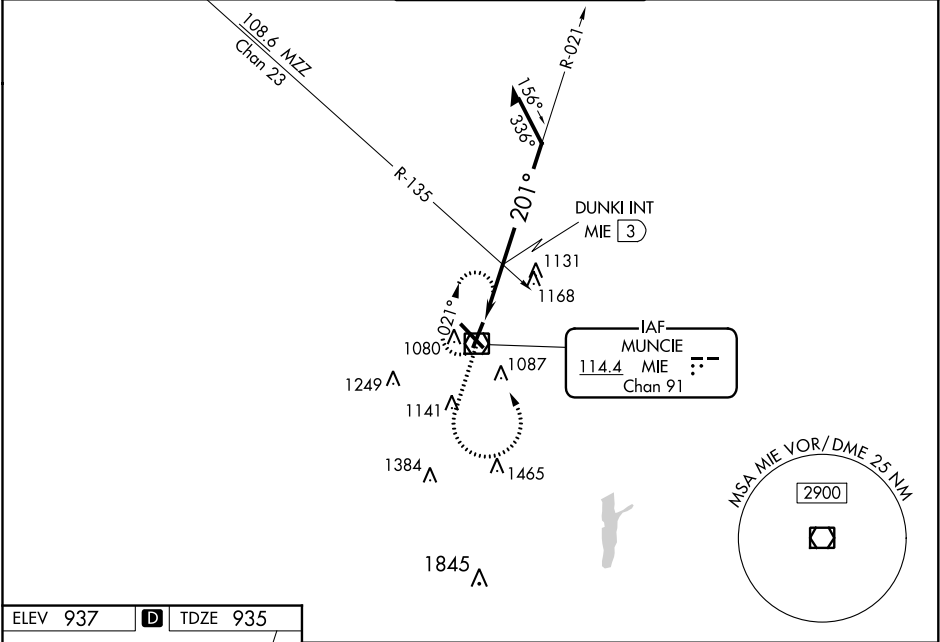
VOR/DME MIE	APP CRS	Rwy Idg
114.4	201°	5197
Chan 91		TDZE 935
		Apt Elev 937

VOR RWY 21
DELAWARE COUNTY RGNL (MIE)

▼ Visibility reduction by helicopters NA. When local altimeter setting not received, use Fort Wayne Intl altimeter setting and increase all MDAs 140 feet; increase S-21 Cat C visibility ½ SM and Cat D visibility ¼ SM; increase Circling Cat C visibility ½ SM and Cat D ¼ SM; DUNKI fix minimums: increase S-21 Cat C/D ¾ SM and Circling visibility Cat C/D ½ SM. VDP NA when using Fort Wayne Intl altimeter setting.

MISSED APPROACH:
Climb to 2200 then climbing left turn to 2600 direct MIE VOR/DME and hold.

ATIS 133.25	INDIANAPOLIS APP CON 120.65 317.8	MUNCIE TOWER★ 120.1 (CTAF) 0	GND CON 121.9	UNICOM 122.95
----------------	--------------------------------------	---------------------------------	------------------	------------------



2200	2600	MIE				
↑	↷	☐				
			MIE VOR/DME 2600	Remain within 10 NM		
*1640 when using Fort Wayne Intl altimeter setting.						
CATEGORY	A	B	C		D	
S-21	1500-1	565 (600-1)	1500-1½ 565 (600-1½)		1500-1¾ 565 (600-1¾)	
CIRCLING	1500-1	563 (600-1)	1500-1½ 563 (600-1½)		1560-2 623 (700-2)	
DUNKI FIX MINIMUMS (DUAL VOR RECEIVERS OR DME REQUIRED)						
S-21	1440-1	505 (600-1)	1440-1½		505 (600-1½)	
CIRCLING	1460-1	523 (600-1)	1480-1½ 543 (600-1½)		1560-2 623 (700-2)	

EC-2, 31 DEC 2020 to 28 JAN 2021

EC-2, 31 DEC 2020 to 28 JAN 2021