

WAAS CH 42528 W24A	APP CRS 238°	Rwy Idg 5000 TDZE 873 Apt Elev 876
--	------------------------	---

RNAV (GPS) RWY 24

CUYAHOGA COUNTY (CGT)

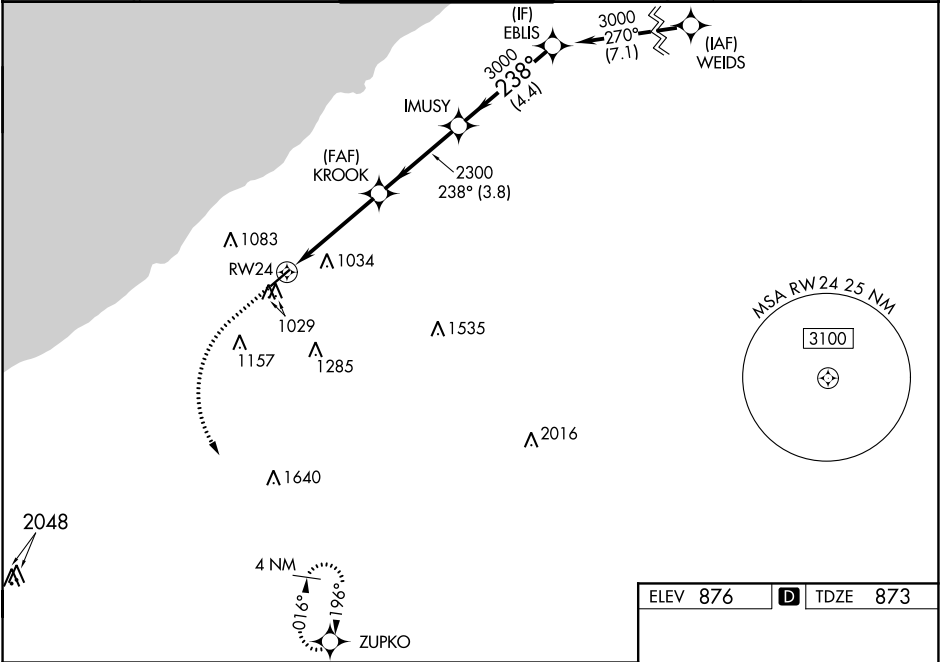
RNP APCH.

For uncompensated Baro-VNAV systems, LNAV/VNAV NA below -16°C or above 38°C . For inop ALS increase LNAV/VNAV visibility all Cats to 7/8 SM, LNAV Cat C, D to 1 1/8 SM.

MALSR

MISSED APPROACH:
Climb to 2500 then climbing left turn to 3000 direct ZUPKO and hold.

AWOS-3 119.95	CLEVELAND APP CON 125.35 346.325	COUNTY TOWER★ 118.5 (CTAF) 0	GND CON 121.85	CLNC DEL 121.85 (when tower closed)
-------------------------	--	--	--------------------------	--



2500	3000	ZUPKO				
*LNAV only						
*1.1 NM to RW24						
CATEGORY	A		B		C	D
LPV DA	1073-1/2 200 (200-1/2)					
LNAV/VNAV DA	1178-1/2 305 (400-1/2)					
LNAV MDA	1280-1/2 407 (500-1/2)		1280-3/4 407 (500-3/4)			
CIRCLING	1400-1 524 (600-1)		1500-1 624 (700-1)		1560-2 684 (700-1)	1620-2 1/2 744 (800-2 1/2)

ELEV 876 **D** TDZE 873

REIL Rwy 6 **0**
HIRL Rwy 6-24 **0**

EC-2, 31 DEC 2020 to 28 JAN 2021

EC-2, 31 DEC 2020 to 28 JAN 2021