

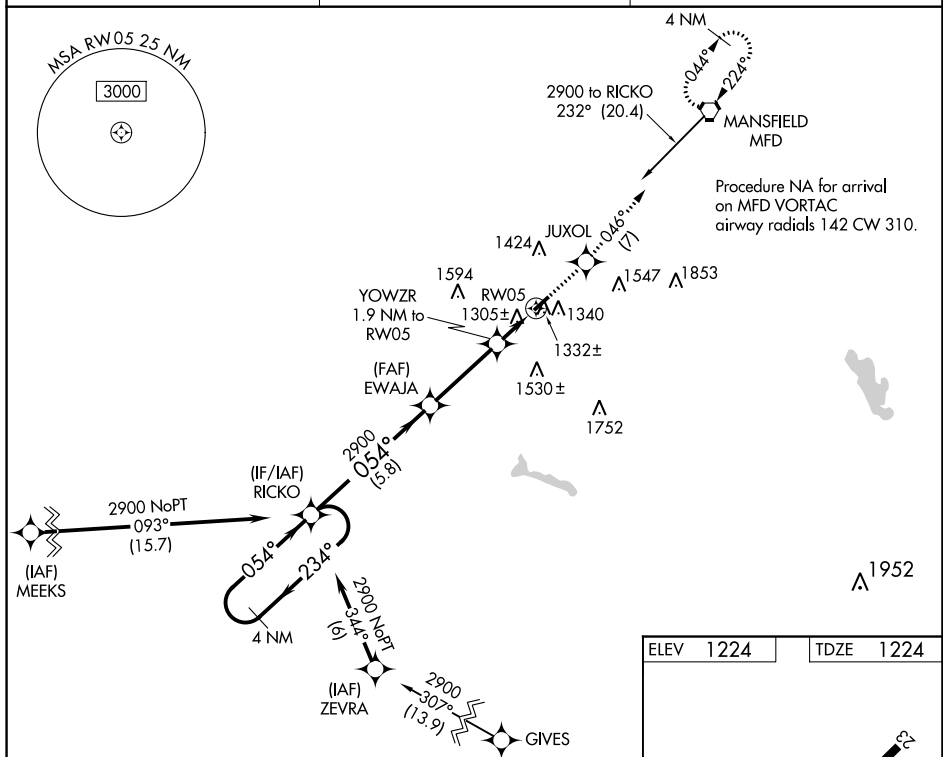
WAAS CH 69223 W05A	APP CRS 054°	Rwy Idg 3318 TDZE 1224 Apt Elev 1224
--	------------------------	---

RNAV (GPS) RWY 5
GALION MUNI (GQQ)

NA Helicopter visibility reduction below 1 SM NA.
DME/DME RNP-0.3 NA. Use Mansfield altimeter setting.
Straight-in Rwy 5 NA at night. Circling Rwy 5 NA at night.

MISSED APPROACH: Climb to 2900 direct JUXOL and on track 046° to MFD VORTAC and hold.

CLEVELAND APP CON ★	CLNC DEL	UNICOM
124.2 360.65	126.8	122.8 (CTAF) ①

[illegible]