

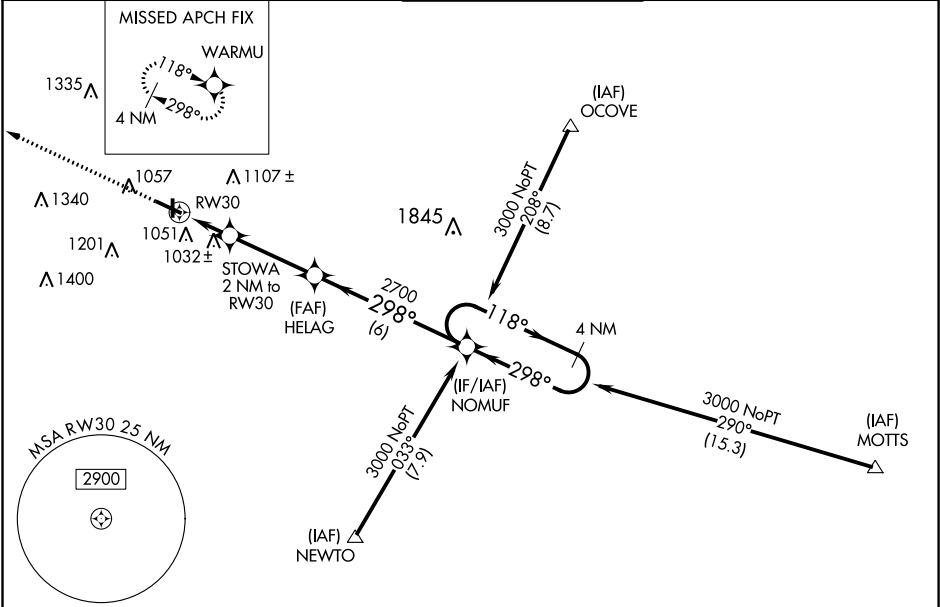
WAAS CH 56415 W30A	APP CRS 298°	Rwy Idg TDZE 919 Apt Elev 919
--	------------------------	---

RNAV (GPS) RWY 30

ANDERSON MUNI-DARLINGTON FIELD (AID)

RNP APCH	For uncompensated Baro-VNAV systems, LNAV/VNAV NA below -16°C (4°F) or above 47°C (116°F). When local altimeter setting not received, use Muncie altimeter setting and increase all DA 32 feet and all MDA 40 feet, and increase LPV and LNAV/VNAV all Cats and LNAV Cat C visibility ¼ mile. Inoperative table does not apply. Rwy 30 helicopter visibility reduction below ¾ SM NA.	MALSF 	MISSED APPROACH: Climb to 3000 direct WARMU and hold.
----------	--	-----------	---

AWOS-3 128.55	INDIANAPOLIS APP CON 120.65 317.8	ANDERSON TOWER ★ 126.0 (CTAF) 0	GND CON 121.6	UNICOM 122.95
-------------------------	---	--	-------------------------	-------------------------



ELEV 919	TDZE 919
-----------------	-----------------

