

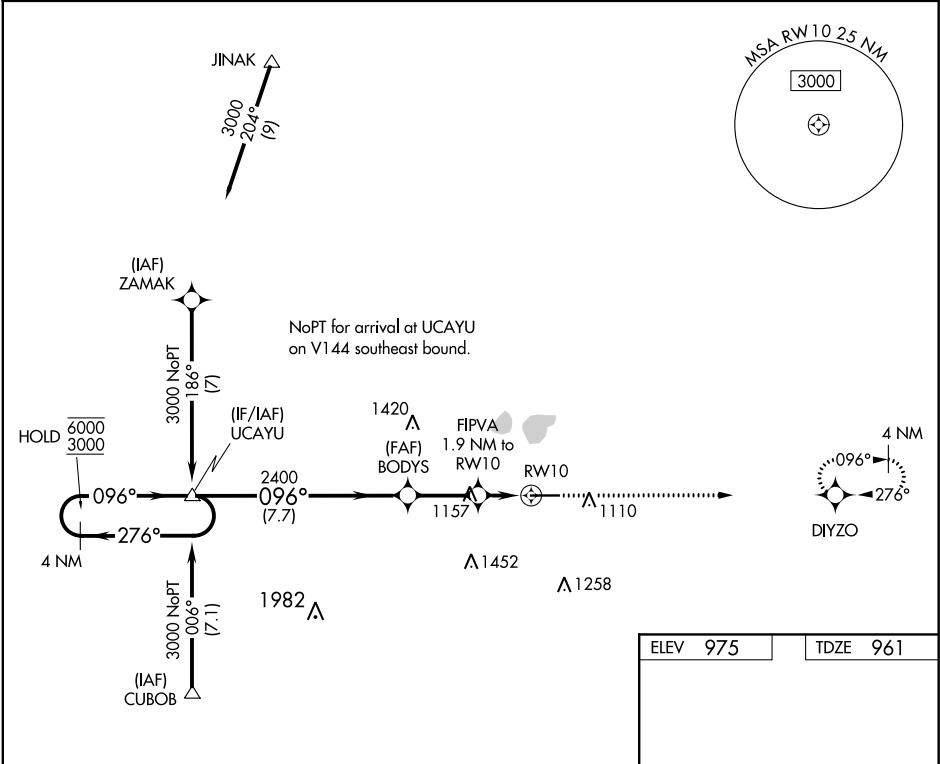
WAAS CH 65816 W10A	APP CRS 096°	Rwy Idg TDZE Apt Elev	6000 961 975
--	------------------------	-----------------------------	---

RNAV (GPS) RWY 10

LIMA ALLEN COUNTY (AOH)

RNP APCH.	MISSED APPROACH: Climb to 3000 direct DIYZO and hold.
Rwy 10 helicopter visibility reduction below ¾ SM NA. For uncompensated Baro-VNAV systems, LNAV/VNAV NA below -16°C or above 54°C.	

ASOS 128.725	COLUMBUS APP CON 118.425 323.15	UNICOM 122.7 (CTAF) 0
------------------------	---	---------------------------------



4 NM Holding Pattern		UCAJU		BODYD		FIPVA		3000		DIYZO	
6000 ← 276°		← 096°		096°		2400		↑		✧	
GP 3.00° TCH 45				✖		1.9 NM to RWY10				*LNAV only	
		7.7 NM		2.5 NM		0.6		1.3 NM		✧	
CATEGORY		A		B		C		D			
LPV DA		1211-1				250 (300-1)					
LNAV/VNAV DA		1272-1				311 (300-1)					
LNAV MDA		1420-1 459 (500-1)				1420-1⅓ 459 (500-1⅓)					

EC-2, 31 DEC 2020 to 28 JAN 2021

EC-2, 31 DEC 2020 to 28 JAN 2021