

APP CRS	Rwy Idg	3494
064°	TDZE	840
	Apt Elev	846

RNAV (GPS) RWY 6

MONROE COUNTY (BMG)

RNP APCH.



ANA

Procedure NA at night.
Rwy 6 helicopter visibility reduction below 1 SM NA.

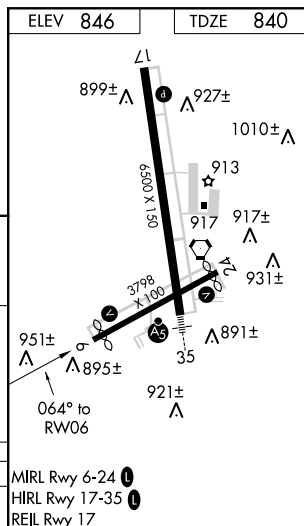
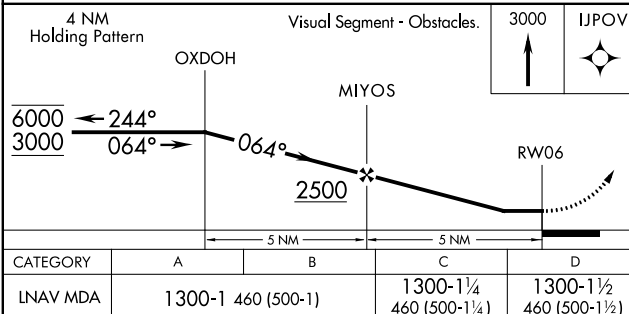
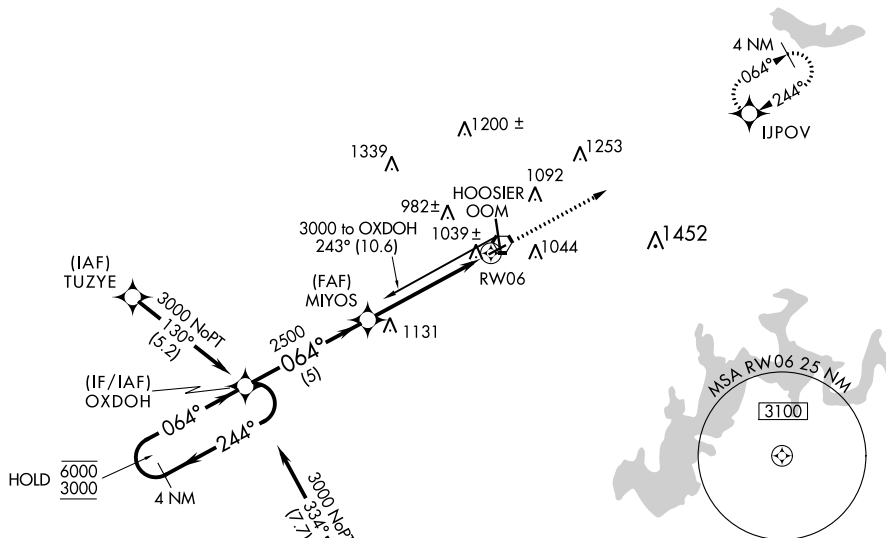
MISSED APPROACH: Climb to 3000 direct IJPOV and hold.

ASOS
110.2

HULMAN APP CON
128.025 339.8

BLOOMINGTON TOWER ★
120.775 (CTAF) **L**

GND CON
121.9

UNICOM
122.95

BLOOMINGTON, INDIANA
Orig-D 18JUL19

39°09'N-86°37'W

MONROE COUNTY (BMG)
RNAV (GPS) RWY 6