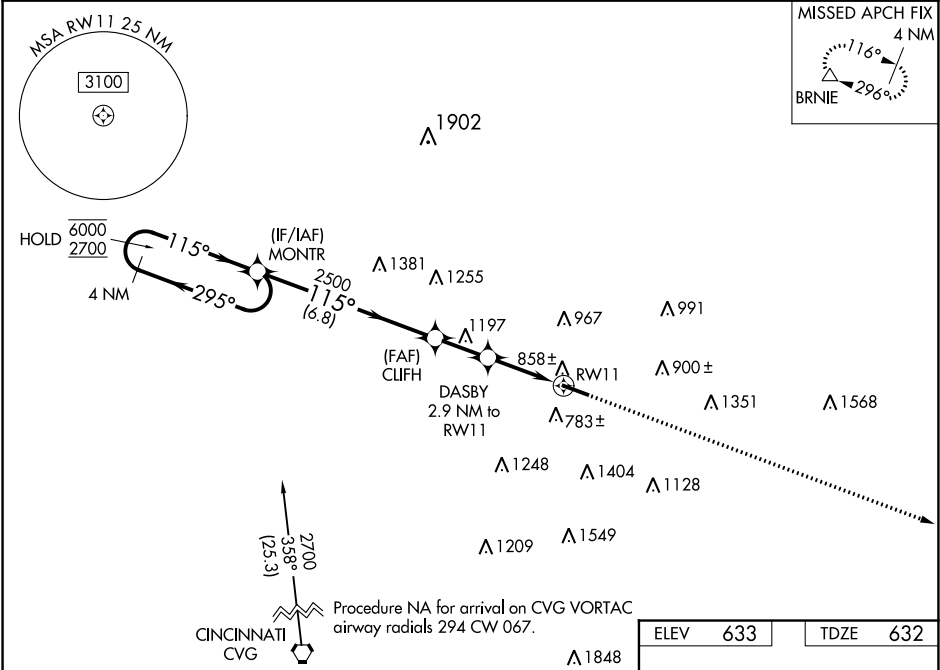


WAAS CH 56600 W11A	APP CRS 115°	Rwy Idg TDZE Apt Elev	5500 632 633
--	------------------------	-----------------------------	---

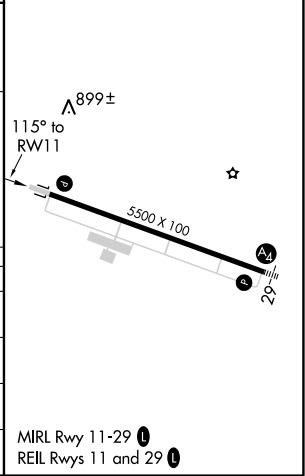
RNAV (GPS) RWY 11

BUTLER COUNTY RGNL-HOGAN FIELD (HAO)

RNP APCH.			MISSED APPROACH: Climb to 3000 direct BRNIE and hold.
ASOS 121.425	CINCINNATI APP CON 121.0 254.25	CLNC DEL 126.25	UNICOM 123.05 (CTAF) 0



4 NM Holding Pattern		VGSI and RNAV glidepath not coincident (VGSI Angle 3.50/TCH 27).		3000 ↑	BRNIE △
MONTR		CLIFH		DASBY	
6000 ← 295° 2700 → 115°		2500		2.9 NM to RW11	
GP 3.50° TCH 40		2500		*1.4 NM to RW11	
		*1740		RW11	
		6.8 NM		2 NM	
		1.5 NM		1.4 NM	
CATEGORY	A	B	C	D	
LPV DA	1020-1 1/8 388 (400-1 1/8)				
LNNAV/ VNAV DA	1108-1 3/8 476 (500-1 3/8)				
LNNAV MDA	1160-1 528 (600-1)		1160-1 1/2 528 (600-1 1/2)		
CIRCLING	1160-1 527 (600-1)	1260-1 627 (700-1)	1300-1 3/4 667 (700-1 3/4)	1760-3 1127 (1200-3)	



EC-2, 31 DEC 2020 to 28 JAN 2021

EC-2, 31 DEC 2020 to 28 JAN 2021