

LOC/DME I-GWB 108.75 Chan 24 (Y)	APP CRS 274°	Rwy Idg TDZE Apt Elev 5000 880 880
--	------------------------	--

ILS or LOC RWY 27
DE KALB COUNTY (GWB)

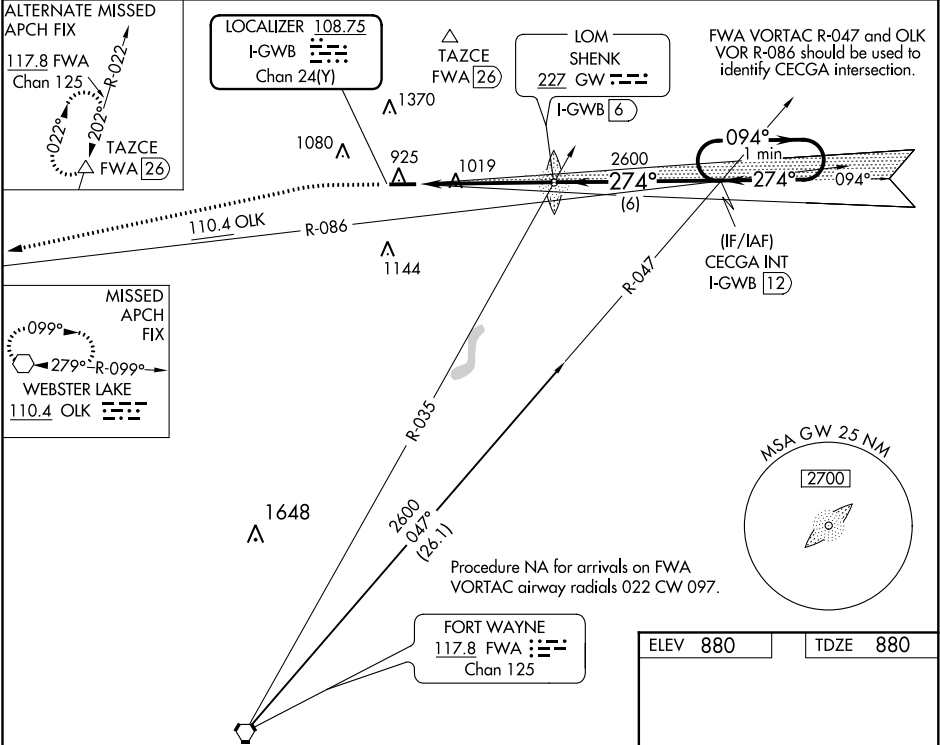
NA

MALSR

AS

MISSED APPROACH: Climb to 1400 then climbing left turn to 3000 direct OLK VOR and hold.

AWOS-3 124.15	FORT WAYNE APP CON 127.2 284.6	CLNC DEL 126.6	UNICOM 123.0 (CTAF) 0
-------------------------	--	--------------------------	--



1400

3000

OLK

SHENK LOM/INT I-GWB [6]

CECGA INT I-GWB [12]

One Minute Holding Pattern

274° 5 NM from FAF

5000 X 100

GS 3.00° TCH 46

*LOC only

I-GWB [1]

*I-GWB [2.2]

2546

094°

274°

2600

1.2 NM

3.8 NM

6 NM

CATEGORY	A	B	C	D
S-ILS 27	1080-½ 200 (200-½)			
S-LOC 27	1320-½ 440 (500-½)		1320-¾ 440 (500-¾)	1320-1 440 (500-1)
CIRCLING	1320-1 440 (500-1)	1560-1 680 (700-1)	1720-2½ 840 (900-2½)	1720-2¾ 840 (900-2¾)

REIL Rwy 9 and 27 **0**

MIRL Rwy 9-27 **0**

FAF to MAP 5 NM

Knots	60	90	120	150	180
Min:Sec	5:00	3:20	2:30	2:00	1:40

EC-2, 31 DEC 2020 to 28 JAN 2021

EC-2, 31 DEC 2020 to 28 JAN 2021