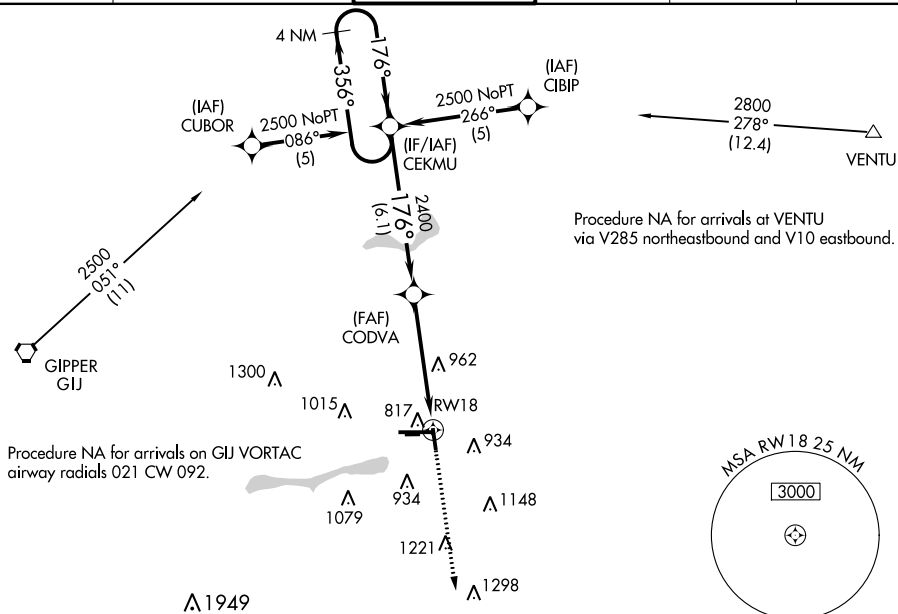


RNAV (GPS) RWY 18
ELKHART MUNI (EKM)

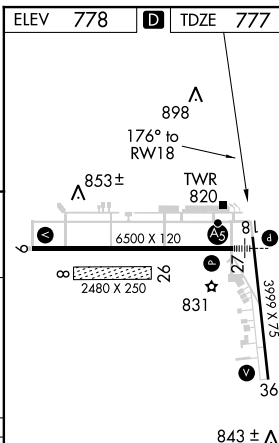
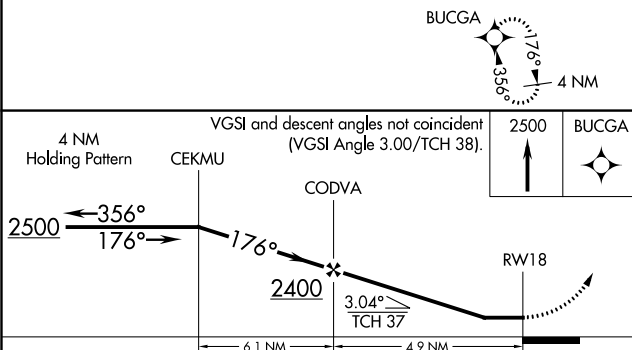
T When local altimeter setting not received, use South Bend altimeter setting and increase all MDA 40 feet. Circling Rwy 36 NA at night. Circling NA to Rwy 8 and 26.


A Rwy 18 helicopter visibility reduction below $\frac{3}{4}$ SM NA.

MISSED APPROACH:
Climb to 2500 direct
BUCGA and hold.

UNICOM
122 95

ELEV	778	D	TDZE	777
------	-----	----------	------	-----



CATEGORY	A	B	C	D
LNAV MDA	1280-1	503 (600-1)	1280-1½	503 (600-1½)
 CIRCLING	1280-1 502 (600-1)	1300-1 522 (600-1)	1380-1¼ 602 (700-1¼)	1580-2½ 802 (900-2½)

MIRL Rwy 18-36 **L**
HIRL Rwy 9-27 **L**
REIL Rwy 9, 18 and 36 **L**